



Ohio Department of Job and Family Services
Bureau of Long Term Care Facilities

Case Mix Trends

Intermediate Care Facilities for the Mentally Retarded (ICFs-MR)

2002 - 2007

Introduction

This report is the result of the effort of the Case Mix Section to track and report on significant trends in mean and median Intermediate Care Facilities for the Mentally Retarded (ICF-MR) case mix scores. Beginning with the reporting period end date 12/31/02, this report is updated on a quarterly basis. Case Mix reporting periods occur quarterly and end on the last day of March, June, September, and December each year.

Questions or comments can be directed to:

Case Mix Section
Bureau of Long Term Care Facilities
Ohio Department of Job and Family Services
(614) 644-9395

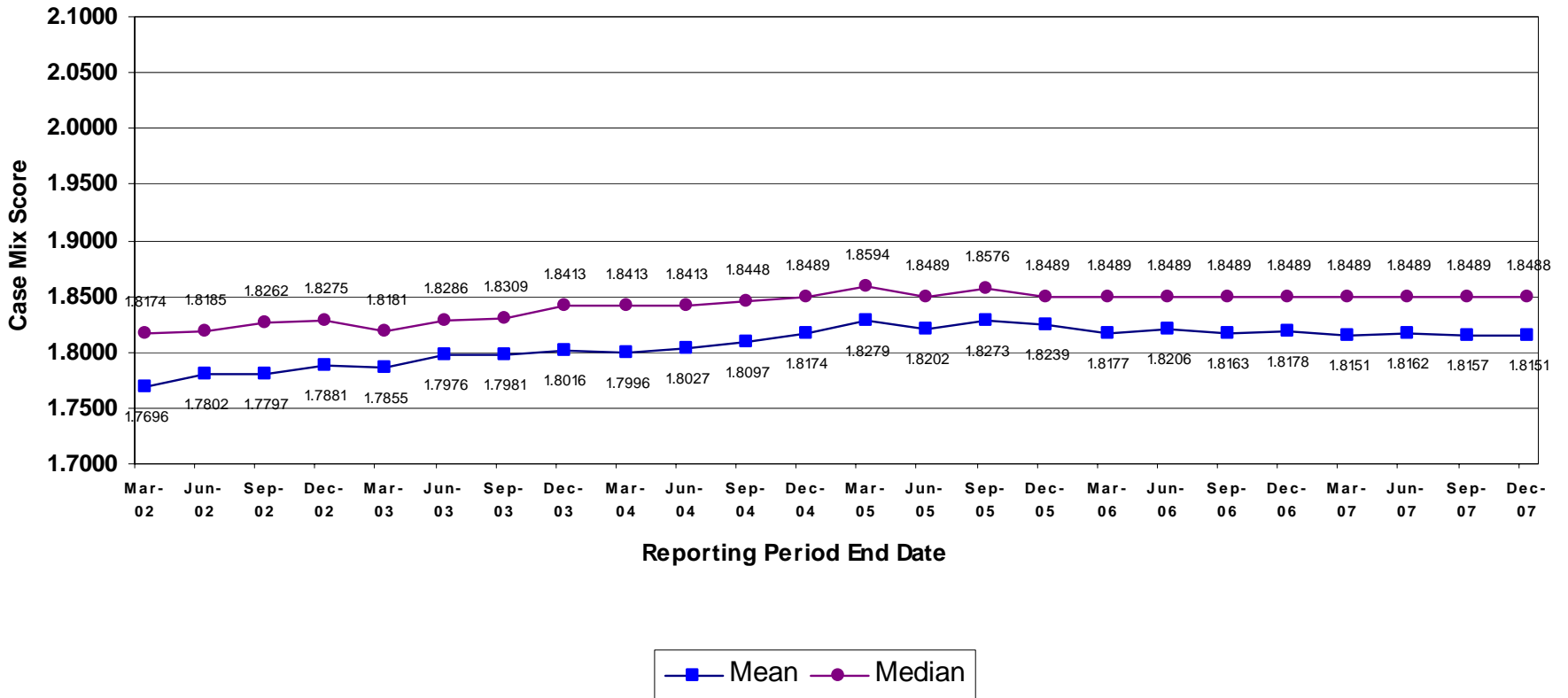
Special requests for this or other information can be made at the following website:

<http://jfs.ohio.gov/0000OurServices.stm>

or by calling Legal Services at (614) 466-4605.

ICF-MR Case Mix

Arithmetic Mean and Median Facility Average Quarterly Scores (RPED 3/31/02 - 12/31/07)

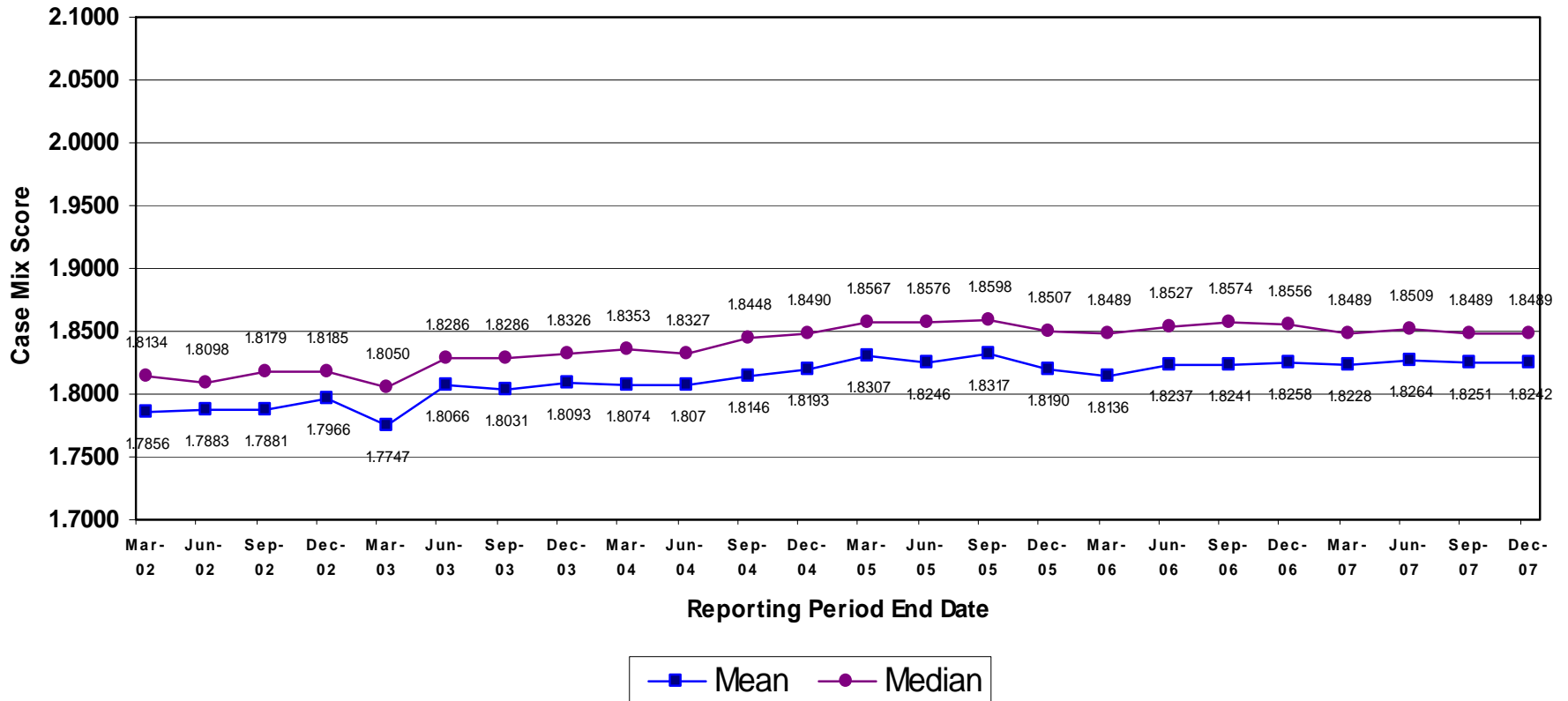


* Note: The number of active providers used in calculations decreased during the first quarter of 2003 due to changes in ownership.

ICF-MR Case Mix

Large Direct Peer Group Arithmetic Mean and Median Facility

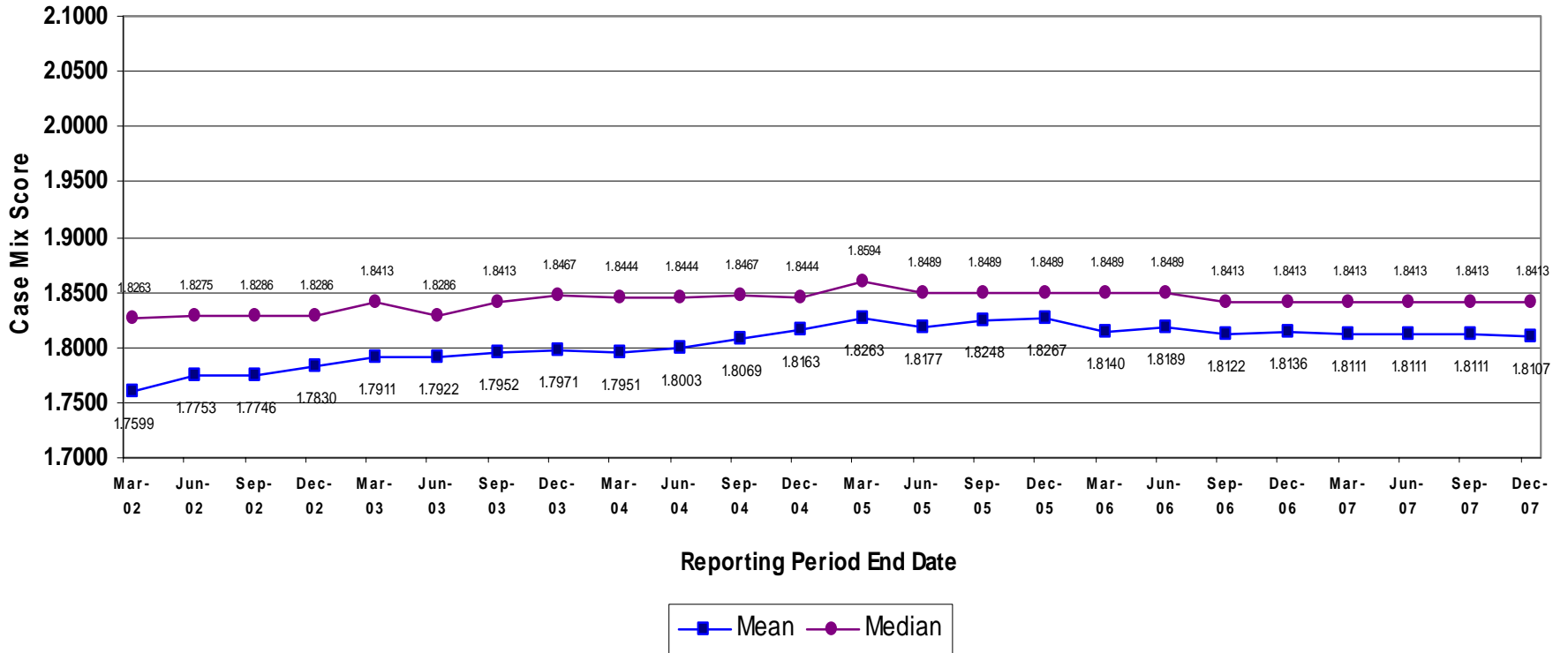
Average Quarterly Scores (RPED 3/31/02 - 12/31/07)



* Note: The number of active providers used in calculations decreased during the first quarter of 2003 due to changes in ownership.

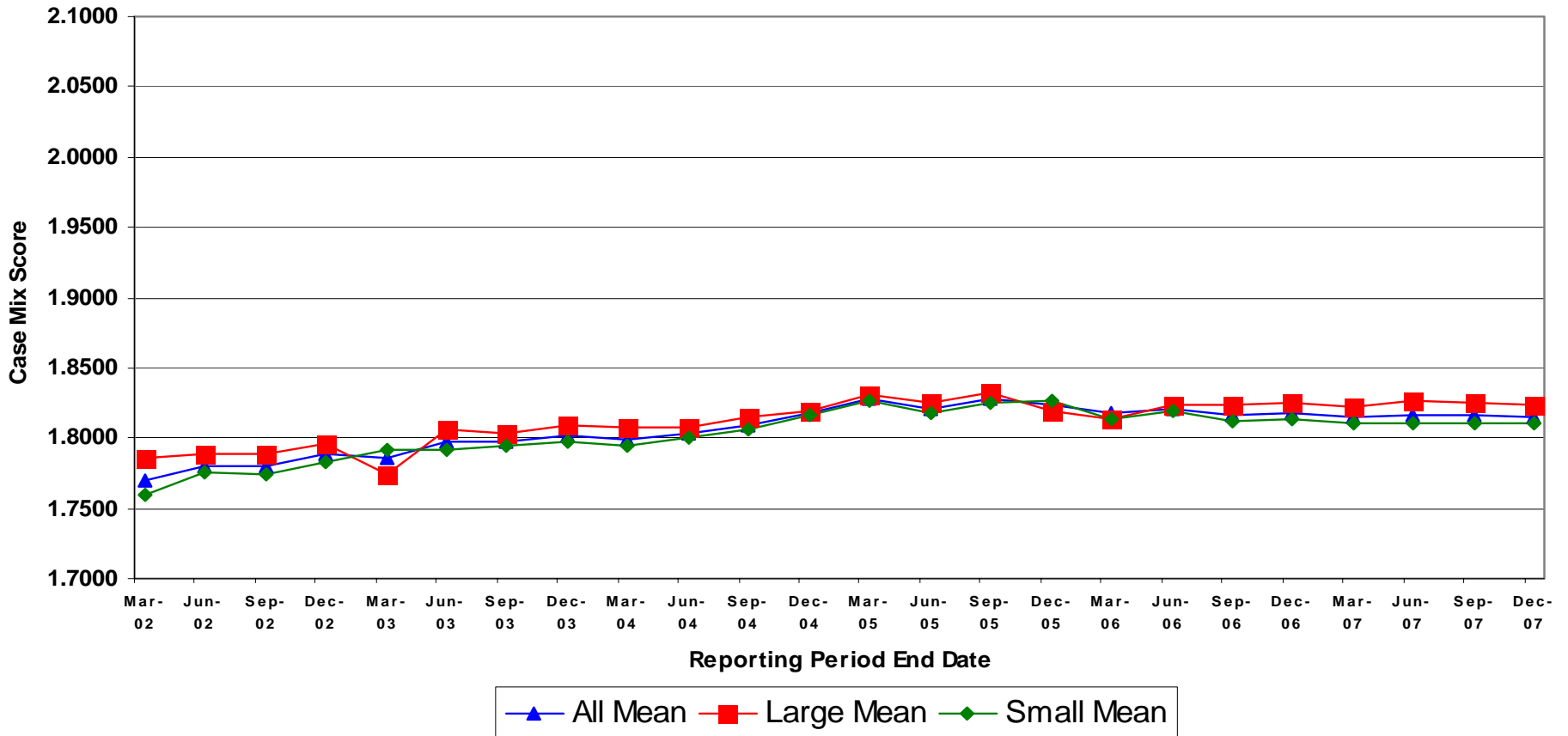
ICF-MR Case Mix

Small Direct Peer Group Arithmetic Mean and Median Facility Average Quarterly Scores
(RPED 3/31/02 - 12/31/07)



ICF-MR Case Mix

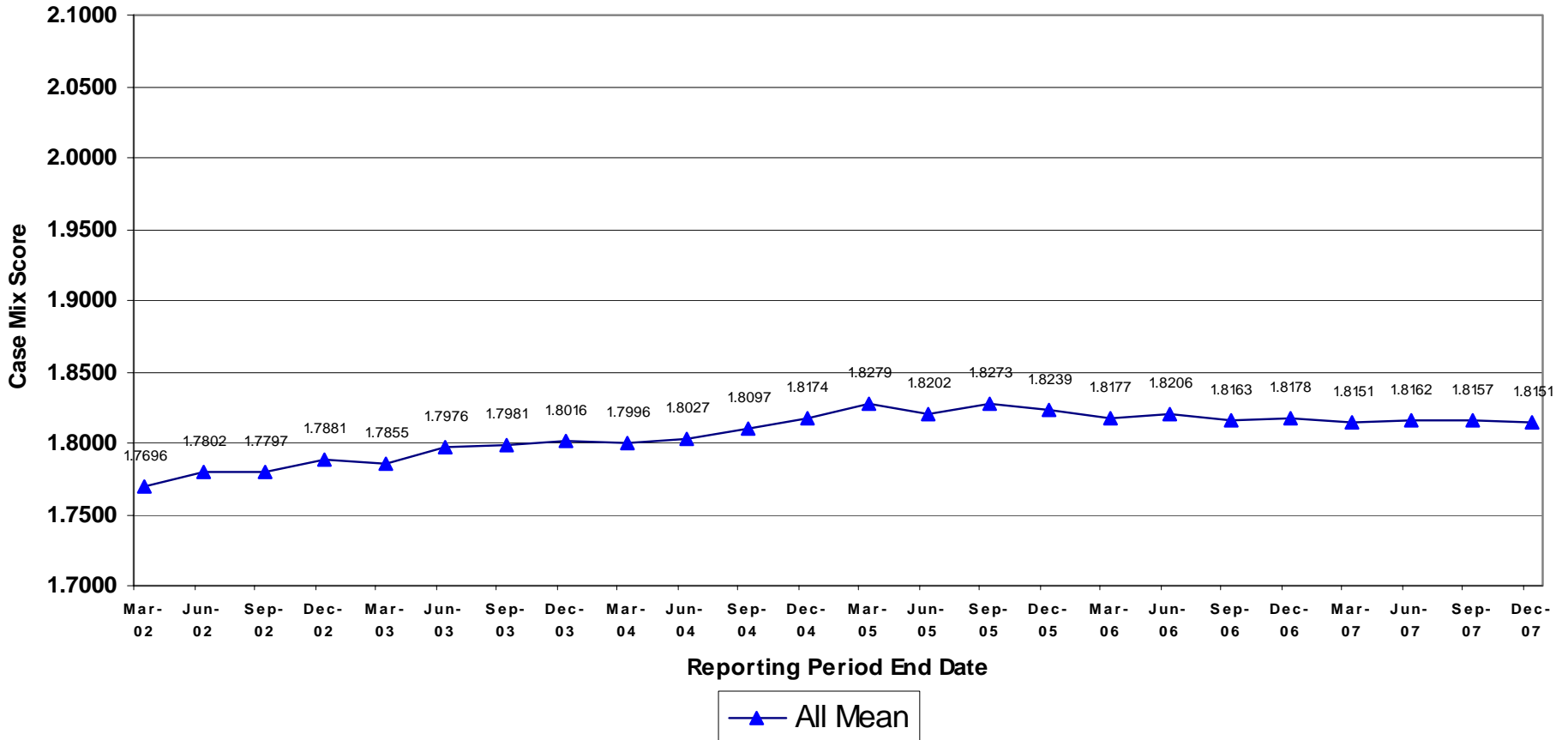
Direct Peer Groups Arithmetic Mean Facility Average Quarterly Scores
(RPED 3/31/02 - 12/31/07)



* Note: The number of active providers used in calculations decreased during the first quarter of 2003 due to changes in ownership.

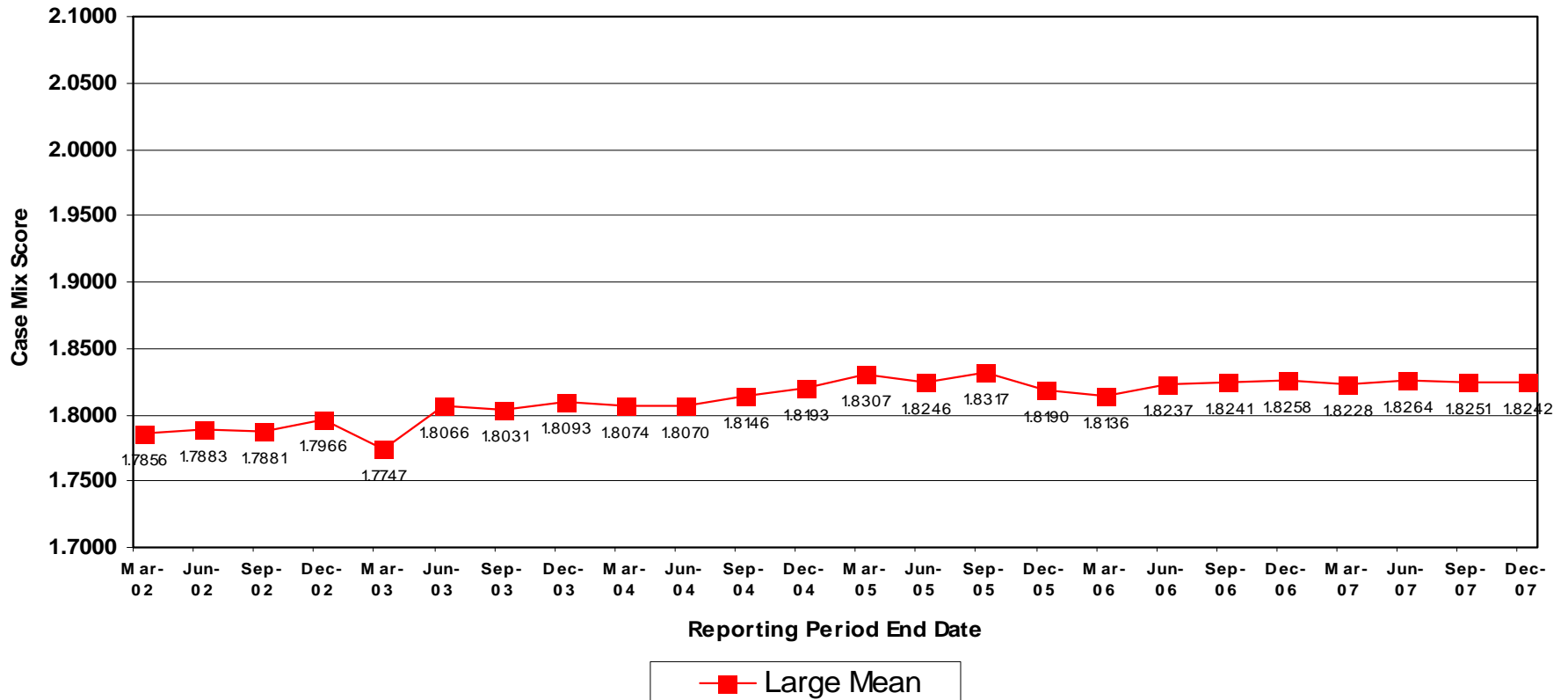
ICF-MR Case Mix

All Direct Peer Groups Arithmetic Mean Facility Average Quarterly Scores
(RPED 3/31/02 - 12/31/07)



ICF-MR Case Mix

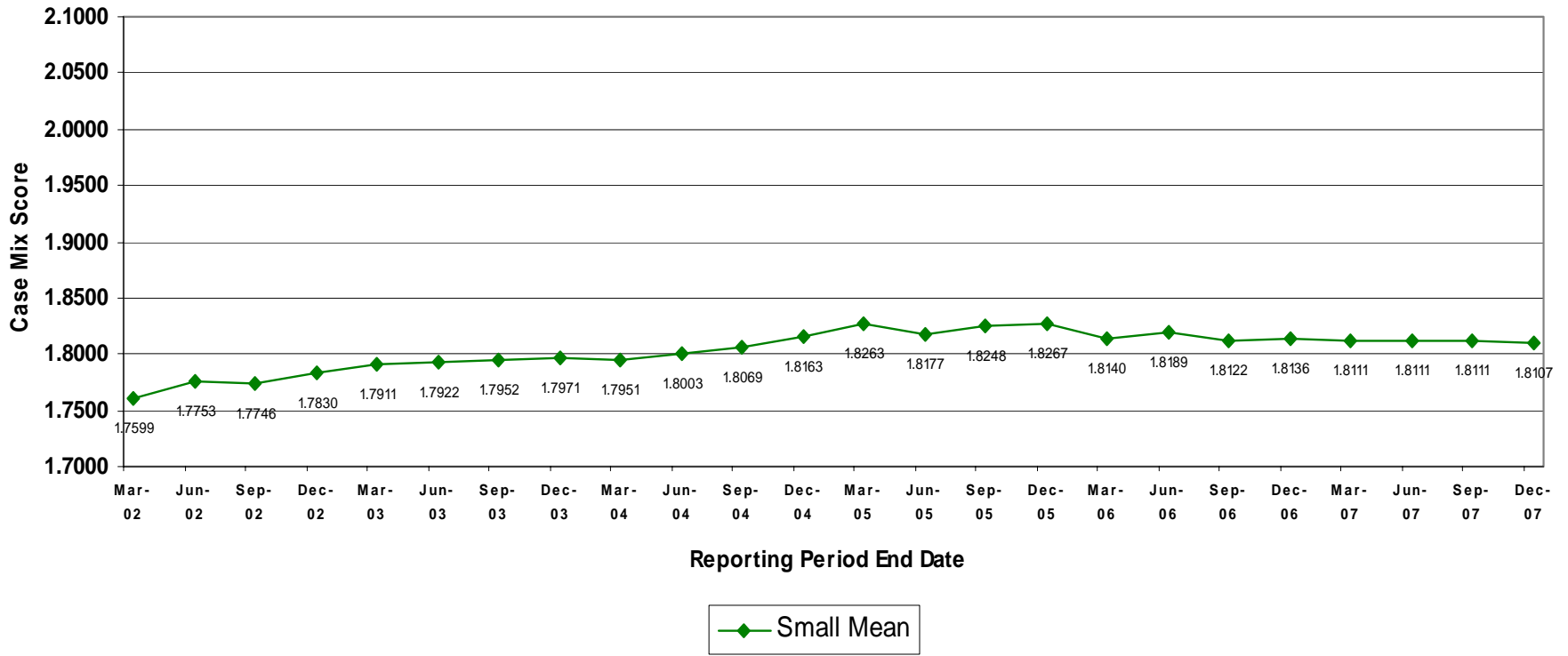
Large Direct Peer Group Arithmetic Mean Facility Average Quarterly Scores
(RPED 3/31/02 - 12/31/07)



* Note: The number of active providers used in calculations decreased during the first quarter of 2003 due to changes in ownership.

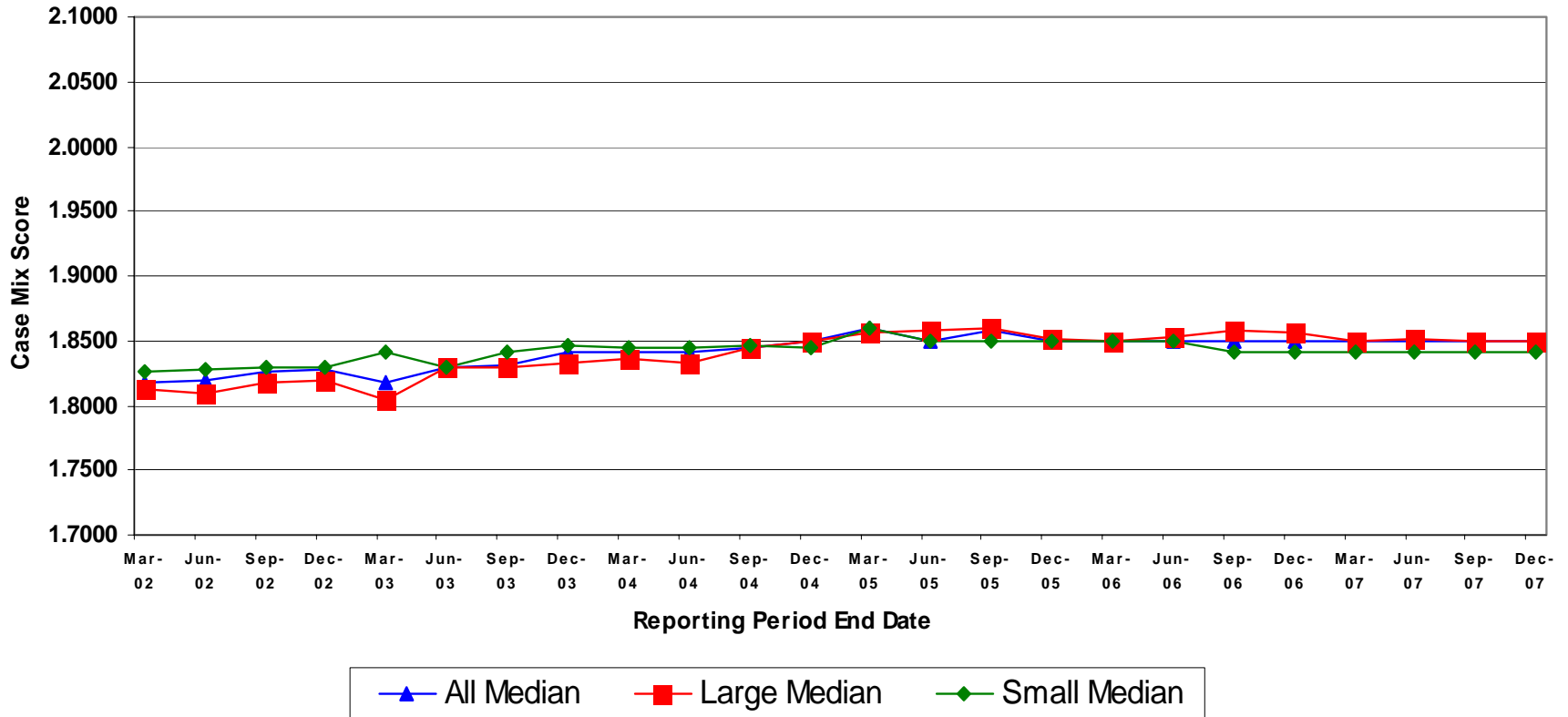
ICF-MR Case Mix

Small Direct Peer Group Arithmetic Mean Facility Average Quarterly Scores
(RPED 3/31/02 - 12/31/07)



ICF-MR Case Mix

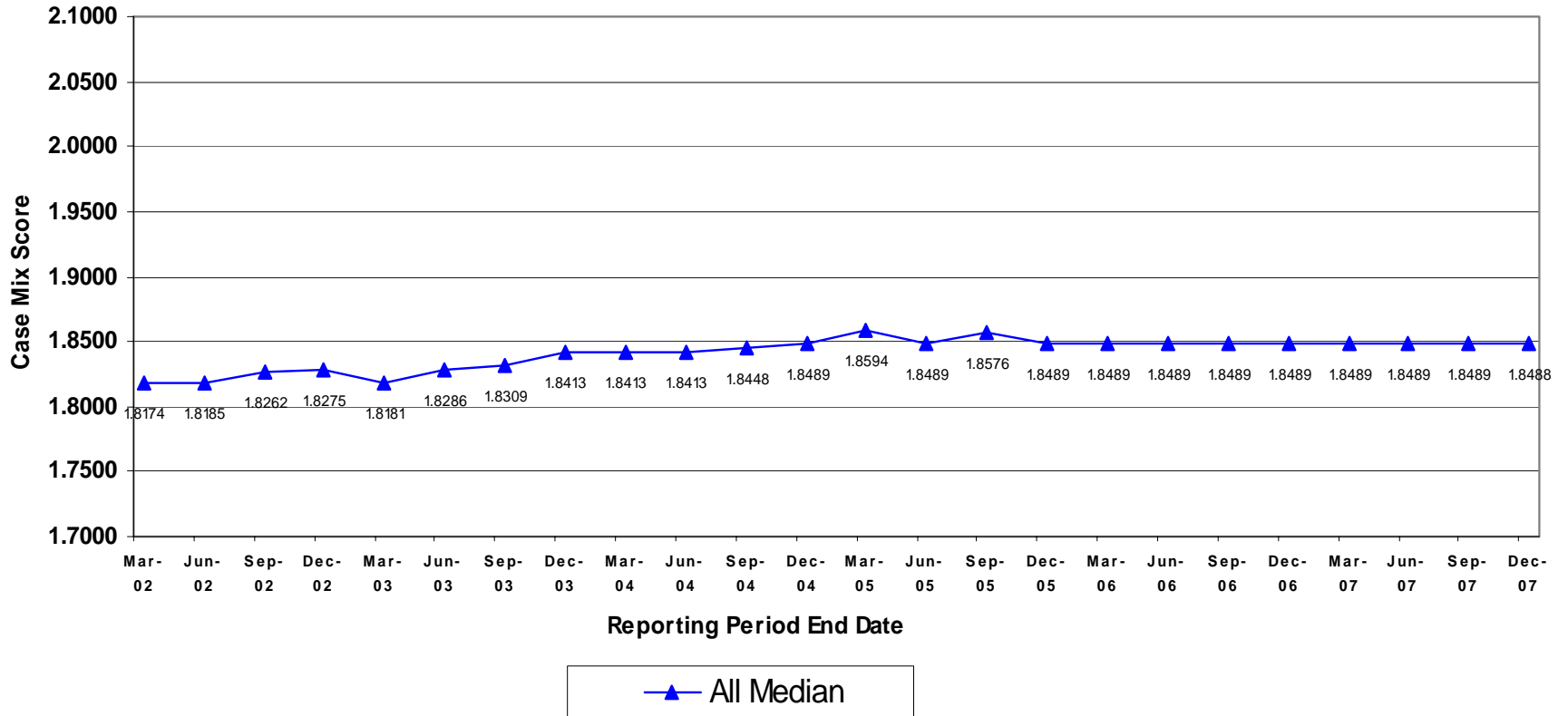
Direct Peer Groups Arithmetic Median Facility Average Quarterly Scores
(RPED 3/31/02 - 12/31/07)



* Note: The number of active providers used in calculations decreased during the first quarter of 2003 due to changes in ownership.

ICF-MR Case Mix

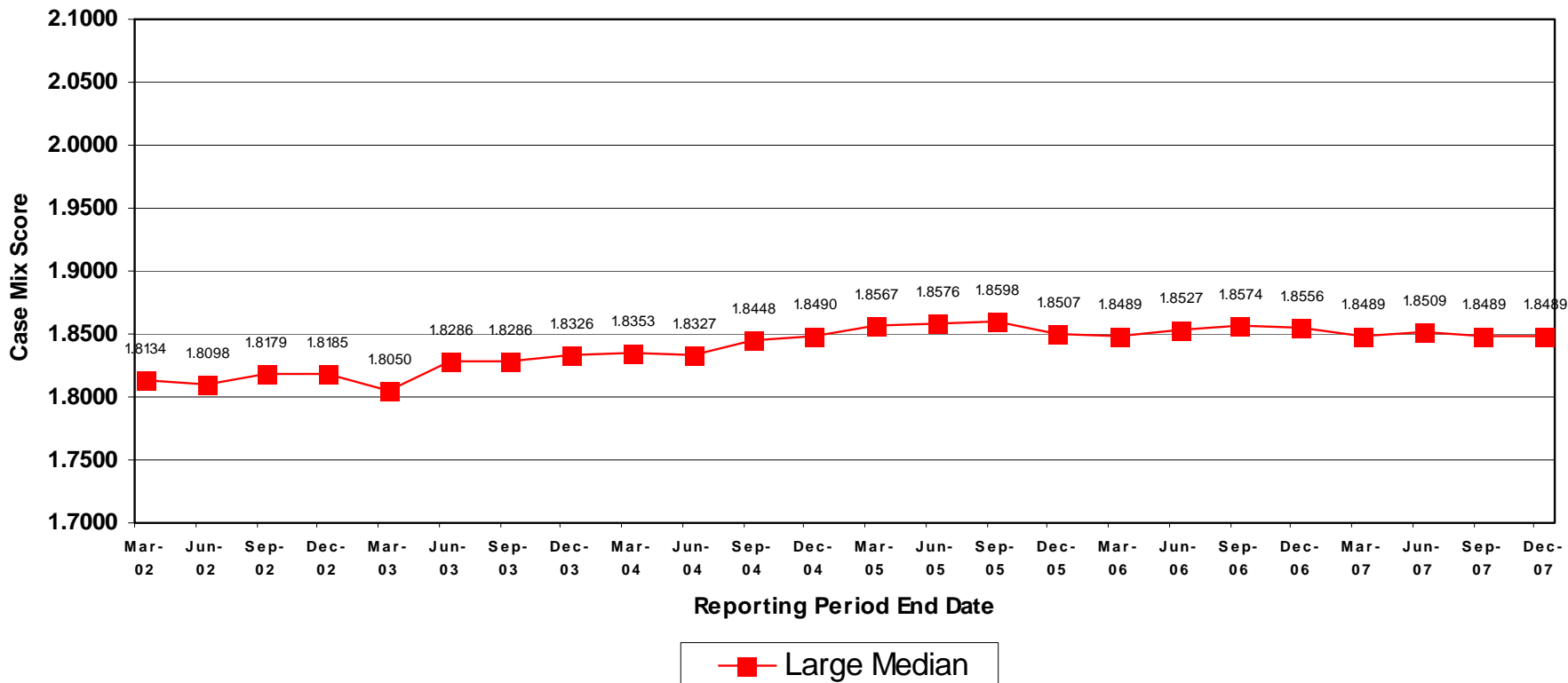
All Direct Peer Groups Arithmetic Median Facility Average Quarterly Scores
(RPED 3/31/02 - 12/31/07)



* Note: The number of active providers used in calculations decreased during the first quarter of 2003 due to changes in ownership.

ICF-MR Case Mix

Large Direct Peer Group Arithmetic Median Facility Average Quarterly Scores
(RPED 3/31/02 - 12/31/07)



* Note: The number of active providers used in calculations decreased during the first quarter of 2003 due to changes in ownership.

ICF-MR Case Mix

Small Direct Peer Group Arithmetic Median Facility Average Quarterly Scores

(RPED 3/31/02 - 12/31/07)

