



Department of
Job and Family Services

Ted Strickland, Governor

Douglas E. Lumpkin, Director

Nursing Facilities: MDS Case Mix Trends

May 2009

Table of Contents

1. Data Source: Minimum Data Set
2. Quarterly Average Case Mix Scores
3. Annual Average Case Mix Scores
4. Semi-Annual Average Case Mix Scores
5. Direct Peer Groups: Semi-Annual Average Case Mix Scores
6. Resource Utilization Groups (RUGs)
7. Activities of Daily Living Scores (ADLs)

1. Data Source: Minimum Data Set

- The Minimum Data Set (MDS) is the data source for the following Case Mix Trends report. MDS assessment data was used to generate statewide averages for case mix scores, resource utilization groups, and activities of daily living scores.
- The MDS is part of the federally mandated process for clinical assessment of all residents in Medicare or Medicaid certified nursing facilities. This process provides a comprehensive assessment of each resident's functional capabilities and helps nursing facility staff identify health problems. MDS assessment forms are completed for all residents in certified nursing facilities, regardless of source of payment for the individual resident. MDS assessments are required for residents on admission to the nursing facility and then periodically, within specific guidelines and time frames. In most cases, participants in the assessment process are licensed health care professionals employed by the nursing facility. MDS data is transmitted electronically by nursing facilities to the State MDS database, which is housed at the Ohio Department of Health. MDS data from the State database is captured into the national MDS database at the Centers of Medicare and Medicaid Services (CMS).
- For more information regarding the MDS, please visit CMS's Web site at: http://www.cms.hhs.gov/MDSPubQlandResRep/01_Overview.asp#TopOfPage

2. Quarterly Average Case Mix Scores

All Resident Assessments, RPED 3-31-2000 through 3-31-2009

Medicaid-Only Resident Assessments, RPED 12-31-2005 through 3-31-2009

Notes:

1/ RPED = Reporting Period End Date and represents a snapshot of MDS assessments selected for reimbursement during a reporting quarter.

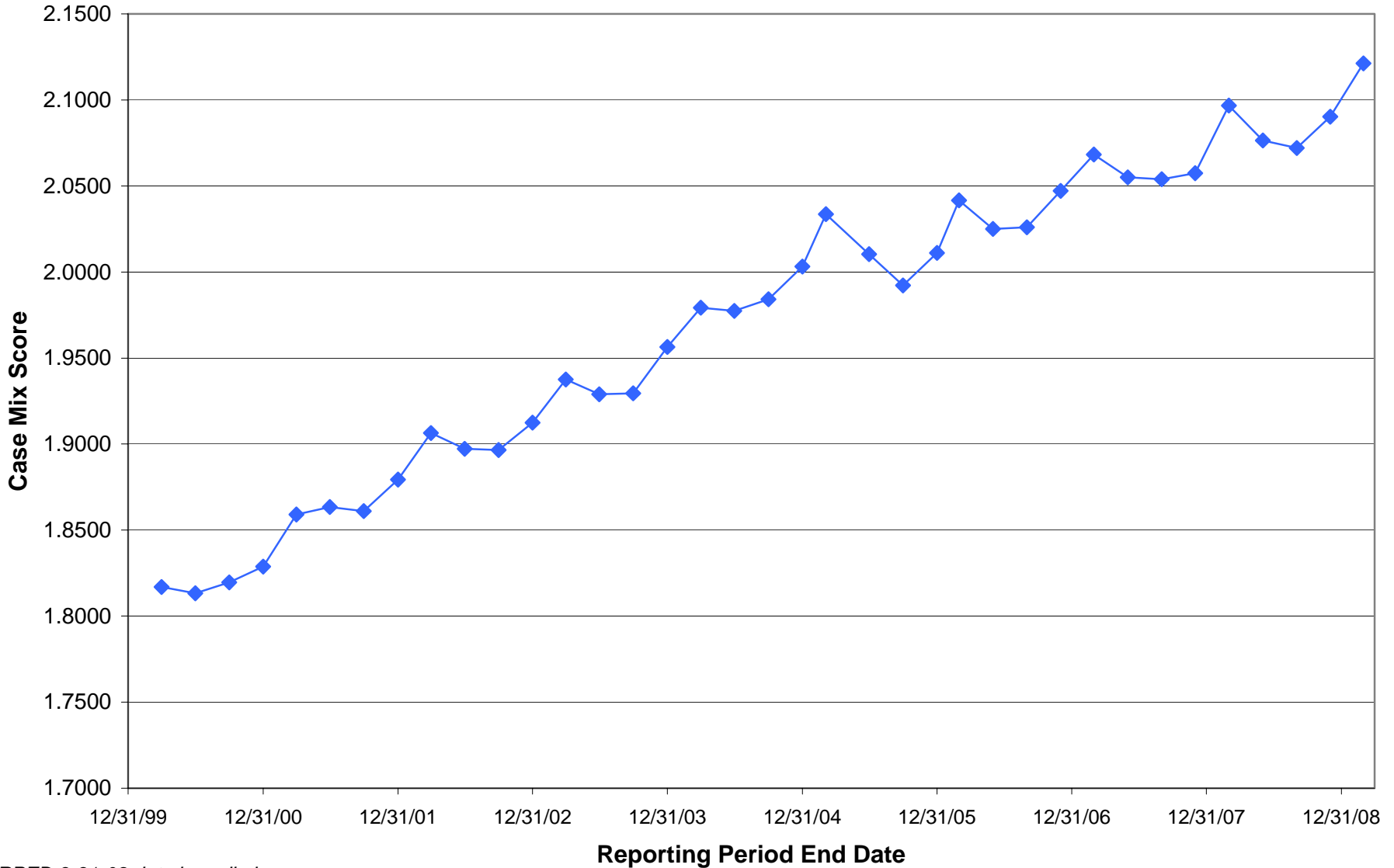
2/ Medicaid-Only case mix scores began 12-31-2005.

3/ RPED 3-31-2009 data is preliminary.

Nursing Facilities - Quarterly Case Mix Scores

Statewide Facility Arithmetic Mean Score (All Residents)

Reporting Period End Dates 3/31/2000 - 3/31/2009*

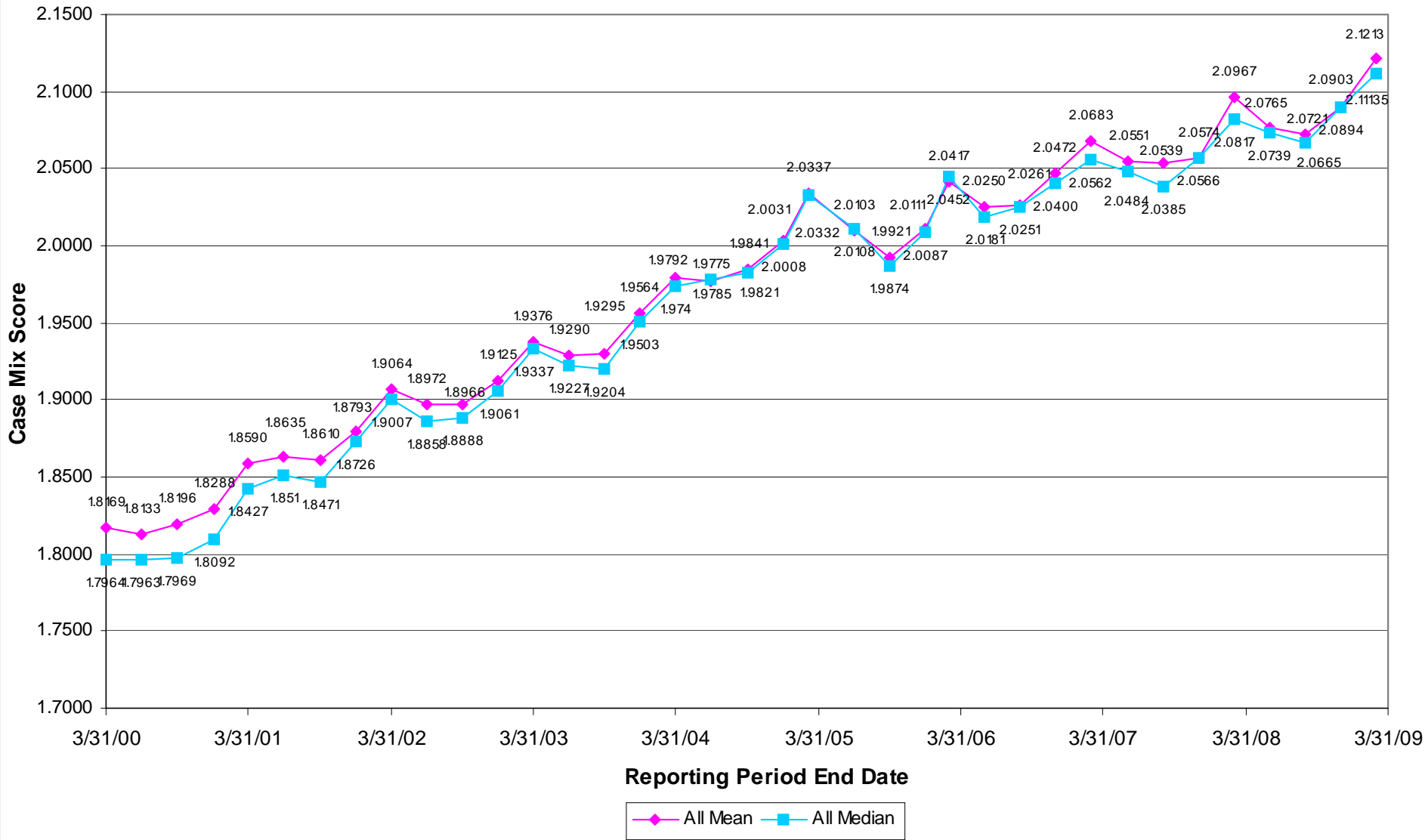


*RPED 3-31-09 data is preliminary.

Nursing Facilities - Quarterly Case Mix Scores

Statewide Facility Arithmetic Mean & Median Scores (All Residents)

Reporting Period End Dates 3/31/2000 - 3/31/2009*



*RPED 3-31-09 data is preliminary.

Ohio Nursing Facilities: Quarterly Case Mix Scores
Reporting Period End Date 12/31/2005 - Reporting Period End Date 12/31/2008

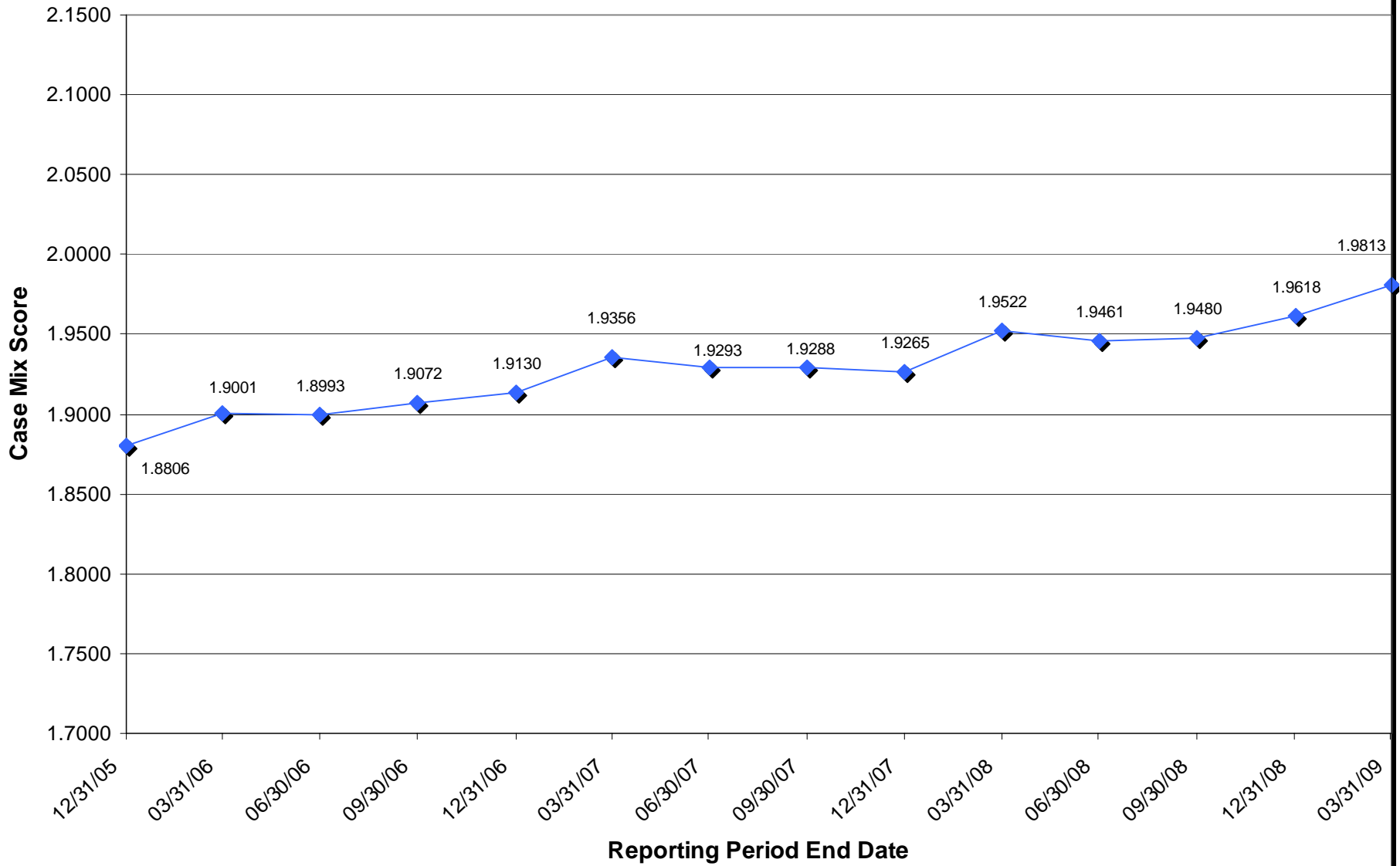
		12/31/2005	3/31/2006	6/30/2006	9/30/2006	12/31/2006	3/31/2007	6/30/2007	9/30/2007	12/31/2007	3/31/2008	6/30/2008	9/30/2008	12/31/2008	3/31/2009
All Residents	Mean	2.0111	2.0417	2.0250	2.0261	2.0472	2.0683	2.0551	2.0539	2.0574	2.0967	2.0765	2.0721	2.0903	2.1213
	Median	2.0087	2.0452	2.0181	2.0251	2.0400	2.0562	2.0484	2.0385	2.0566	2.0817	2.0739	2.0665	2.0894	2.1114
	Facility Count	931	925	925	923	927	929	923	922	927	927	925	924	930	938
	Assessment Count	80,629	81,486	81,667	81,661	80,899	81,437	81,326	81,632	81,000	81,358	80,772	81,370	79,982	80,258
MCAID Residents	Mean	1.8806	1.9001	1.8993	1.9072	1.9130	1.9356	1.9293	1.9288	1.9265	1.9522	1.9461	1.9480	1.9618	1.9813
	Median	1.8737	1.8938	1.8872	1.9009	1.9051	1.9233	1.9191	1.9173	1.9135	1.9398	1.9367	1.9452	1.9536	1.9699
	Facility Count	923	919	922	917	920	921	918	915	919	921	922	919	925	929
	Assessment Count	50,400	50,590	51,937	52,490	52,042	51,666	51,749	52,703	51,656	50,629	51,232	51,694	51,143	49,896

*RPED 3-31-09 data is preliminary.

Nursing Facilities - Quarterly Medicaid Case Mix Scores

Statewide Facility Arithmetic Mean Score for Medicaid

(RPED 12/31/2005 - RPED 3/31/2009*)

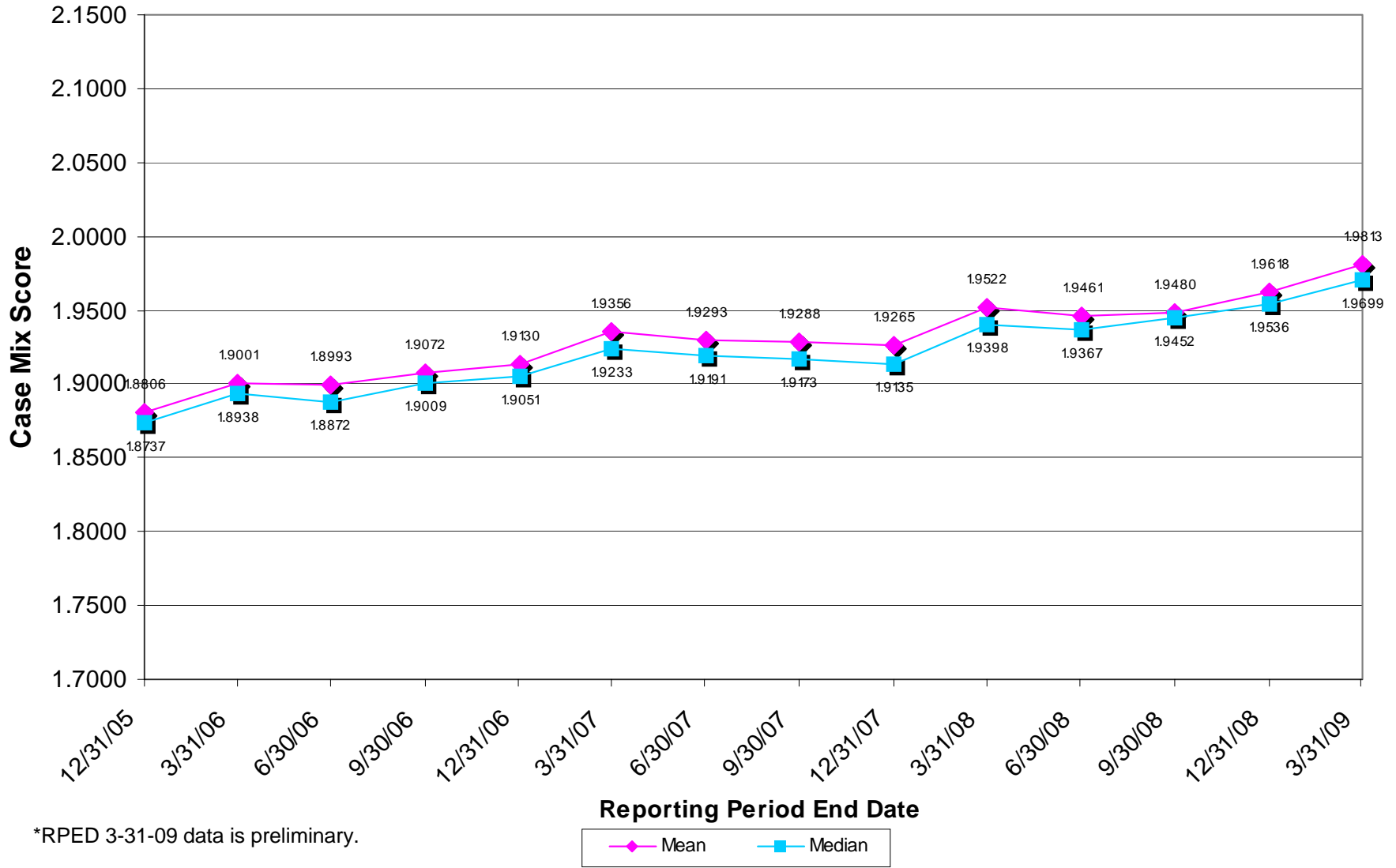


*RPED 3-31-09 data is preliminary.

Nursing Facilities - Quarterly Medicaid Case Mix Scores

Statewide Facility Mean & Median Scores for Medicaid

(RPED 12/31/2005 - RPED 3/31/2009*)



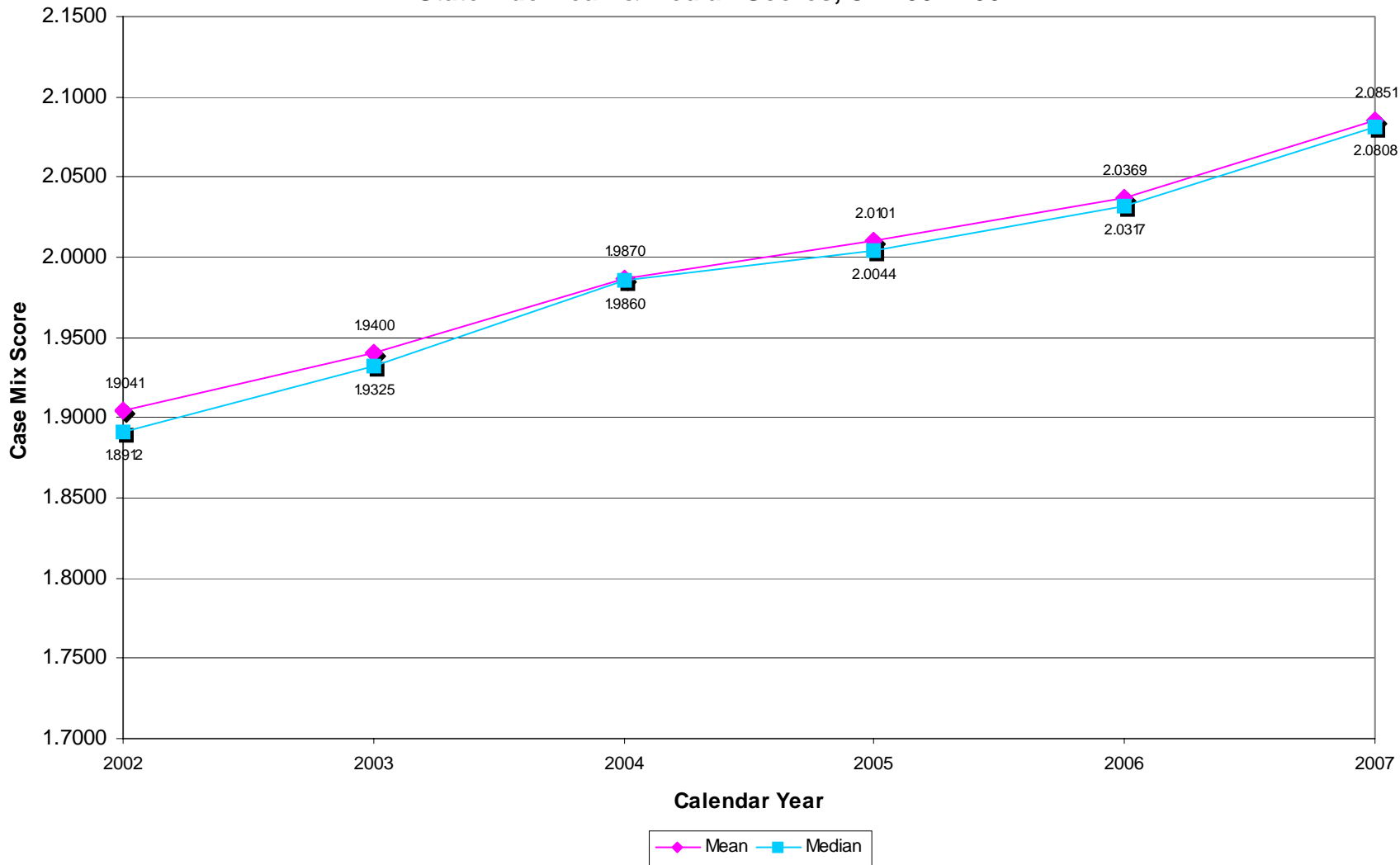
3. Annual Average Case Mix Scores

2002-2007

Note: Next annual run available end-May 2009

Ohio Nursing Facilities: Statewide Average Annual Case Mix Scores

Statewide Mean & Median Scores, CY 2002-2007



**Ohio Nursing Facilities: Statewide Average Annual Case Mix Score Trends
CY 2002-2007**

		2002	2003	2004	2005	2006	2007
All Residents	Mean	1.9041	1.9400	1.9870	2.0101	2.0369	2.0851
	Median	1.8912	1.9325	1.9860	2.0044	2.0317	2.0808
	Facility Count	877	883	905	913	906	915

4. Semi-Annual Average Case Mix Scores

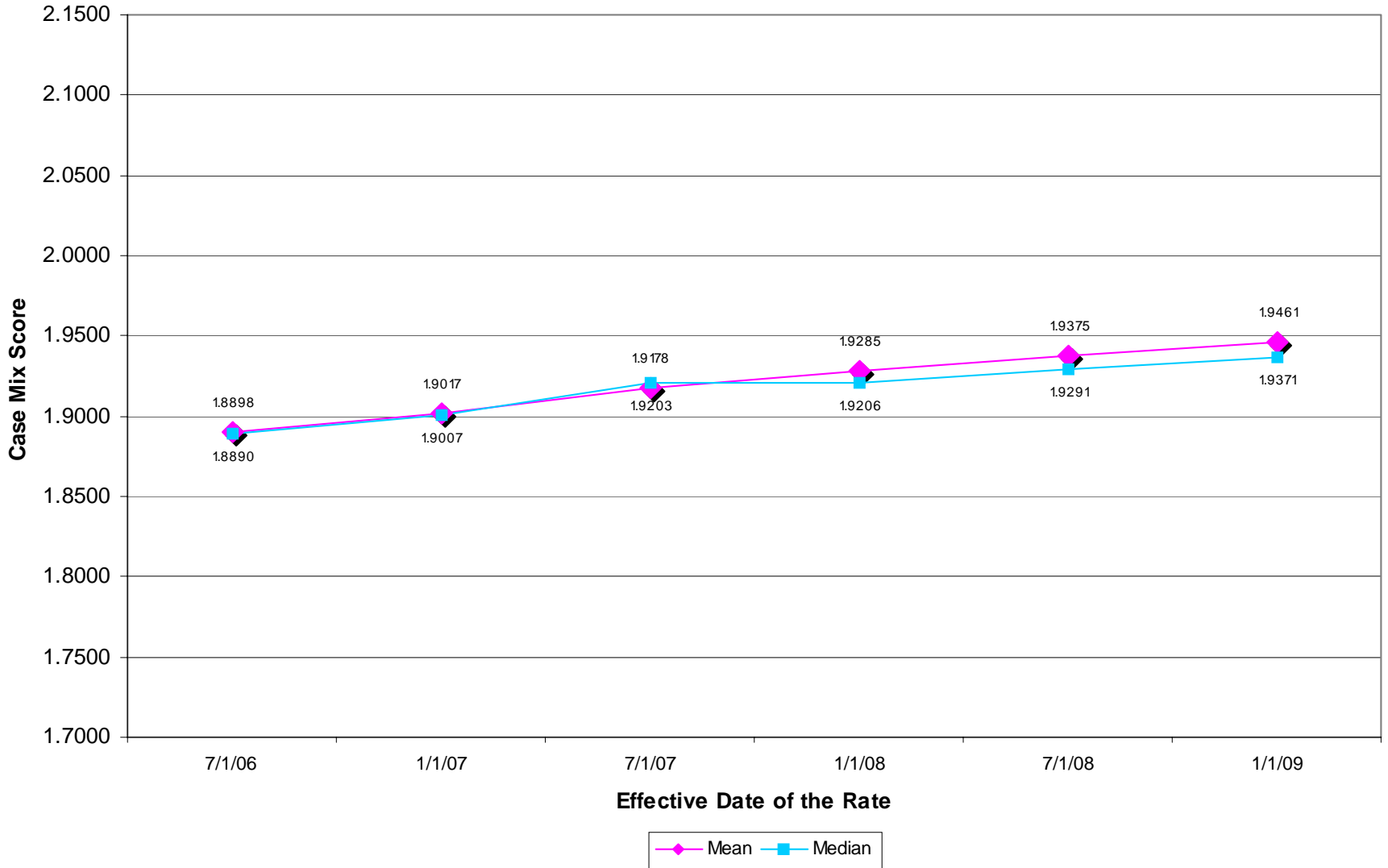
For Effective Date of Rates:

7/1/06 to 1/1/09

Note: Next semi-annual run available July 2009

Nursing Facilities: Semi-Annual Case Mix Scores

Statewide Arithmetic Mean & Median Scores
Effective Date of Rates 7/1/06 through 1/1/09



Ohio Nursing Facilities: Statewide Average Semi-Annual Case Mix Score Trends for Effective Date of Rates 7/1/06 through 1/1/09

		7/1/06	1/1/07	7/1/07	1/1/08	7/1/08	1/1/09
Medicaid Residents	Mean	1.8898	1.9017	1.9178	1.9285	1.9375	1.9461
	Median	1.8890	1.9007	1.9203	1.9206	1.9291	1.9371
	Facility Count	933	935	942	913	912	920

Source: Minimum Data Set (MDS) 2.0.

Note: The semiannual score is calculated as a simple average of two quarterly scores. For example, the semiannual facility average medicaid case mix score for the payment period beginning July 1 for a given fiscal year shall be the average of the quarterly facility average Medicaid case mix score from the preceding December and March reporting quarters.

5. Direct Peer Groups: Semi-Annual Average Case Mix Scores

For Effective Date of Rates 7/1/06 through 1/1/09

Direct Care Peer Groups

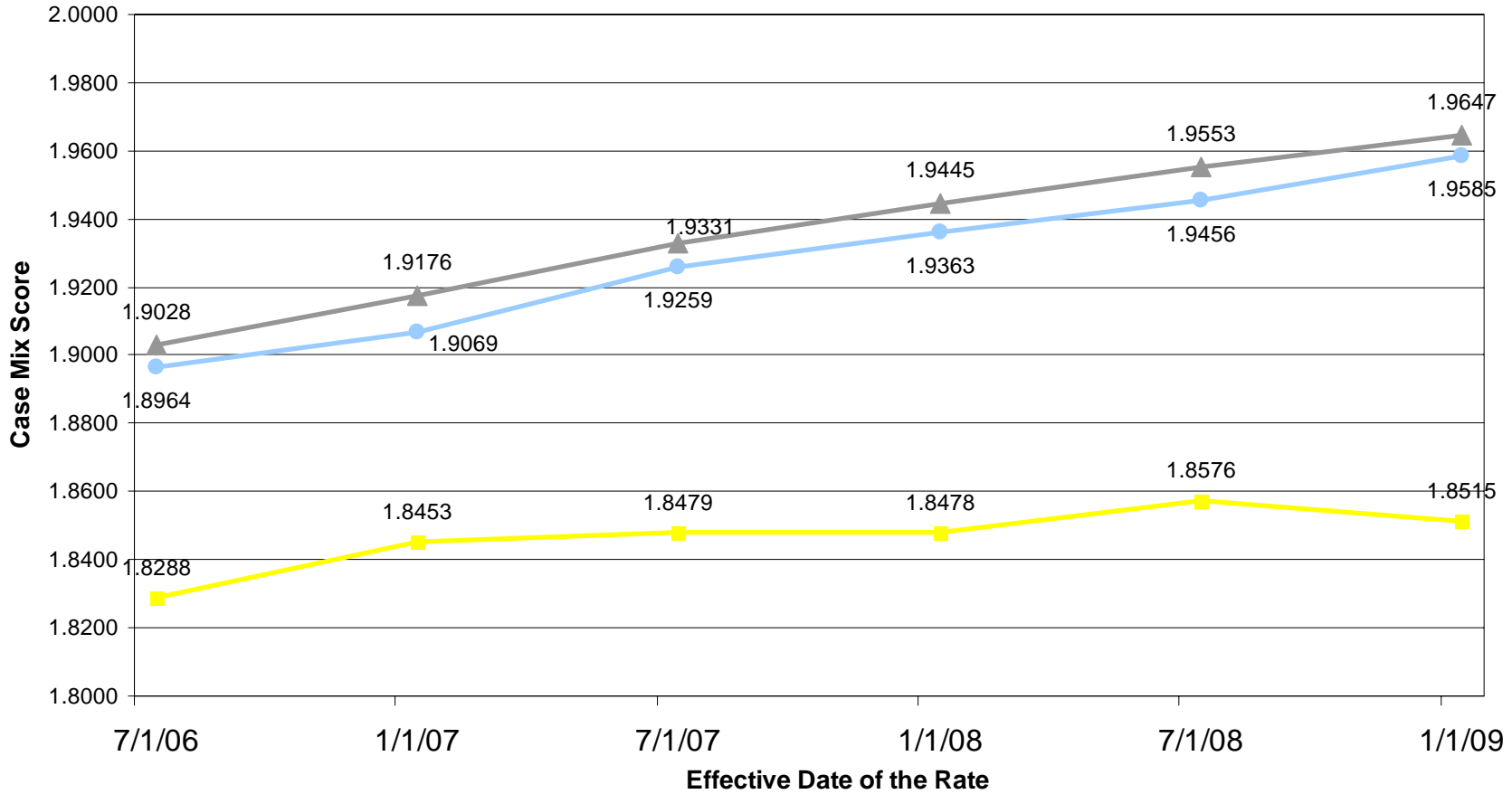
- **Peer Group 1** = Brown, Butler, Clermont, Clinton, Hamilton, and Warren Counties
- **Peer Group 2** = Ashtabula, Champaign, Clark, Cuyahoga, Darke, Delaware, Fairfield, Fayette, Franklin, Fulton, Geauga, Greene, Hancock, Knox, Lake, Licking, Lorain, Lucas, Madison, Marion, Medina, Miami, Montgomery, Morrow, Ottawa, Pickaway, Portage, Preble, Ross, Sandusky, Seneca, Summit, Union, and Wood counties
- **Peer Group 3** = remainder of 88 Ohio counties

Nursing Facilities: Direct Peer Groups - Statewide Average Semi-Annual Case Mix Score Trends
For Effective Date of Rates 7/1/06 through 1/1/09

		7/1/2006		1/1/2007		7/1/2007		1/1/2008		7/1/2008		1/1/2009	
		Count	Statewide Average Case Mix Score	Count	Statewide Average Case Mix Score	Count	Statewide Average Case Mix Score	Count	Statewide Average Case Mix Score	Count	Statewide Average Case Mix Score	Count	Statewide Average Case Mix Score
Medicaid Residents	Peer Group 1	118	1.8288	120	1.8453	122	1.8479	122	1.8478	122	1.8576	123	1.8515
	Peer Group 2	483	1.8964	488	1.9069	494	1.9259	482	1.9363	484	1.9456	488	1.9585
	Peer Group 3	330	1.9028	324	1.9176	322	1.9331	321	1.9445	318	1.9553	319	1.9647

Nursing Facilities: Direct Peer Groups - Statewide Average Semi-Annual Case Mix Score Trends

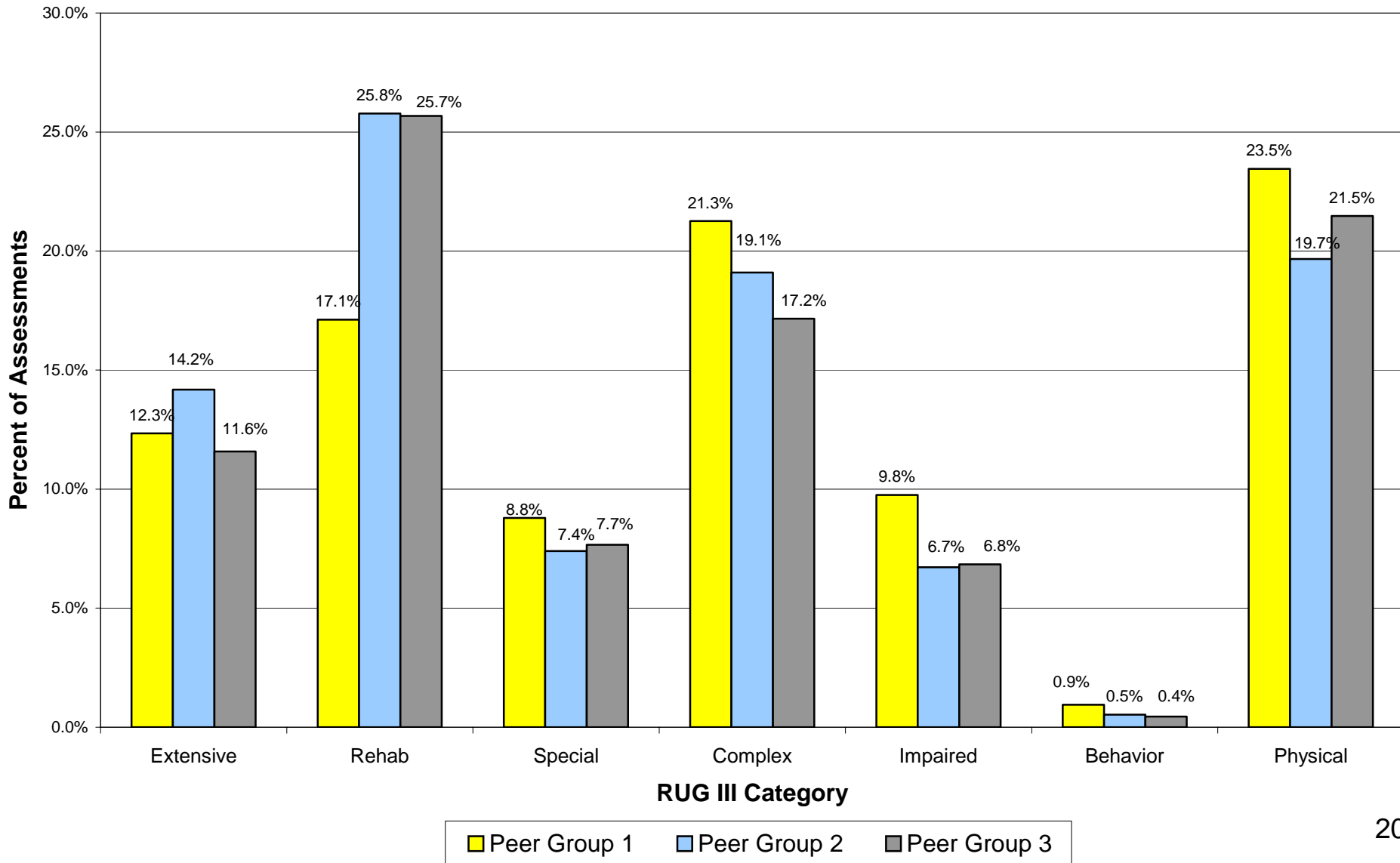
For Effective Dates of Rate 7/1/06 through 1/1/09



Peer Group 1 Peer Group 2 Peer Group 3

Nursing Facilities: Direct Peer Group Case Mix Scores RUG Distribution

Reporting Period End Date - **12/31/2008**



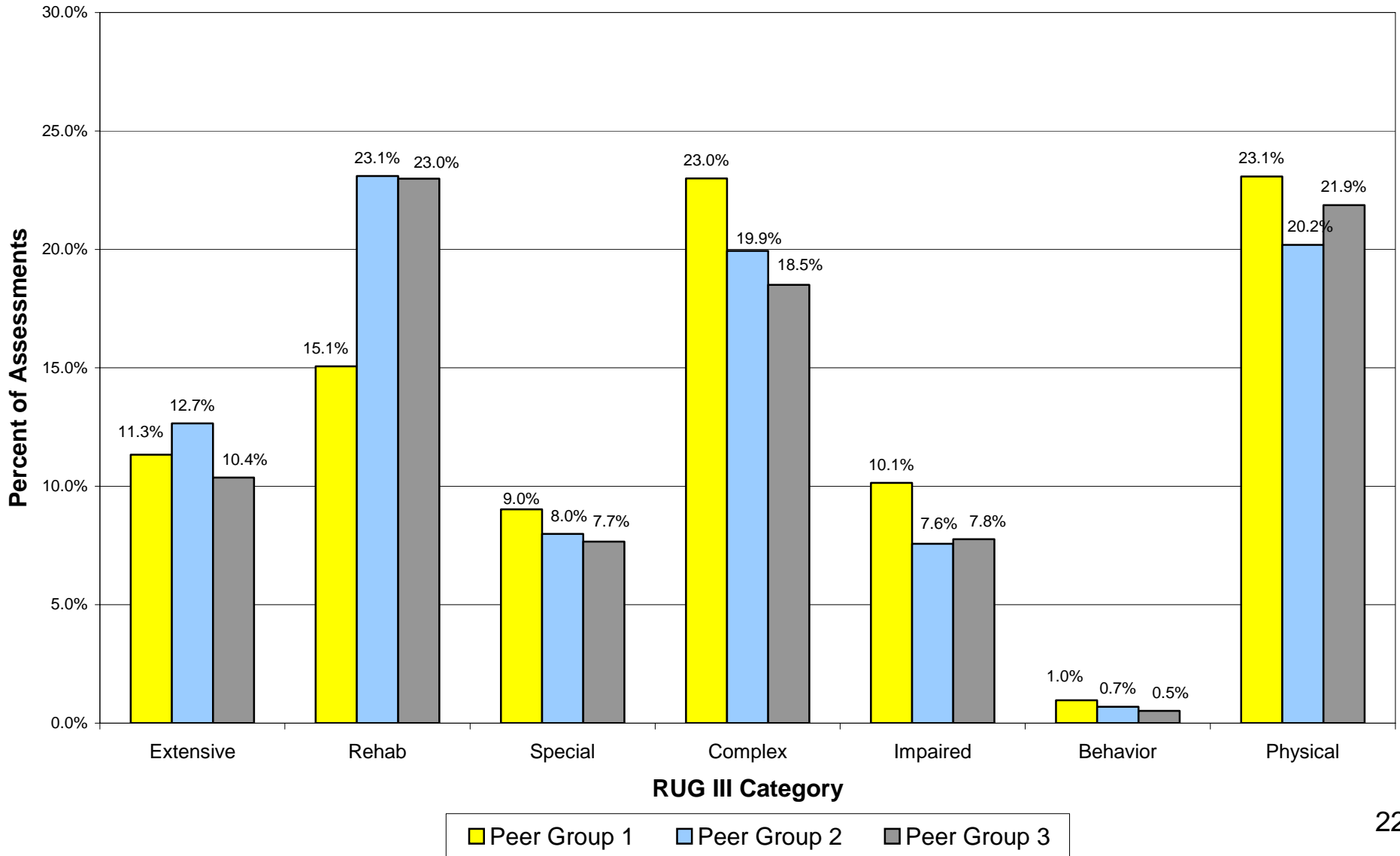
Nursing Facilities: Direct Peer Group Case Mix Scores - RUG Distribution
Reporting Period End Date 12-31-2008

<u>Direct Peer Group</u>	<u>Extensive</u>	<u>Rehab</u>	<u>Special</u>	<u>Complex</u>	<u>Impaired</u>	<u>Behavior</u>	<u>Physical</u>
Peer Group 1	1,458	2,023	1,039	2,513	1,153	111	2,772
Peer Group 2	6,732	12,243	3,512	9,070	3,191	249	9,343
Peer Group 3	3,119	6,916	2,064	4,623	1,841	121	5,784

<u>Direct Peer Group</u>	<u>Extensive</u>	<u>Rehab</u>	<u>Special</u>	<u>Complex</u>	<u>Impaired</u>	<u>Behavior</u>	<u>Physical</u>
Peer Group 1	12.3%	17.1%	8.8%	21.3%	9.8%	0.9%	23.5%
Peer Group 2	14.2%	25.8%	7.4%	19.1%	6.7%	0.5%	19.7%
Peer Group 3	11.6%	25.7%	7.7%	17.2%	6.8%	0.4%	21.5%

Nursing Facilities: Direct Peer Group Case Mix Scores RUG Distribution

Reporting Period End Date - **6/30/2007**



Nursing Facilities: Direct Peer Group Case Mix Scores - RUG Distribution
Reporting Period End Date 6-30-2007

<u>Direct Peer Group</u>	<u>Extensive</u>	<u>Rehab</u>	<u>Special</u>	<u>Complex</u>	<u>Impaired</u>	<u>Behavior</u>	<u>Physical</u>
Peer Group 1	1,354	1,800	1,079	2,749	1,212	115	2,758
Peer Group 2	6,182	11,286	3,900	9,743	3,697	336	9,866
Peer Group 3	2,909	6,449	2,151	5,192	2,178	145	6,137

<u>Direct Peer Group</u>	<u>Extensive</u>	<u>Rehab</u>	<u>Special</u>	<u>Complex</u>	<u>Impaired</u>	<u>Behavior</u>	<u>Physical</u>
Peer Group 1	11.3%	15.1%	9.0%	23.0%	10.1%	1.0%	23.1%
Peer Group 2	12.7%	23.1%	8.0%	19.9%	7.6%	0.7%	20.2%
Peer Group 3	10.4%	23.0%	7.7%	18.5%	7.8%	0.5%	21.9%

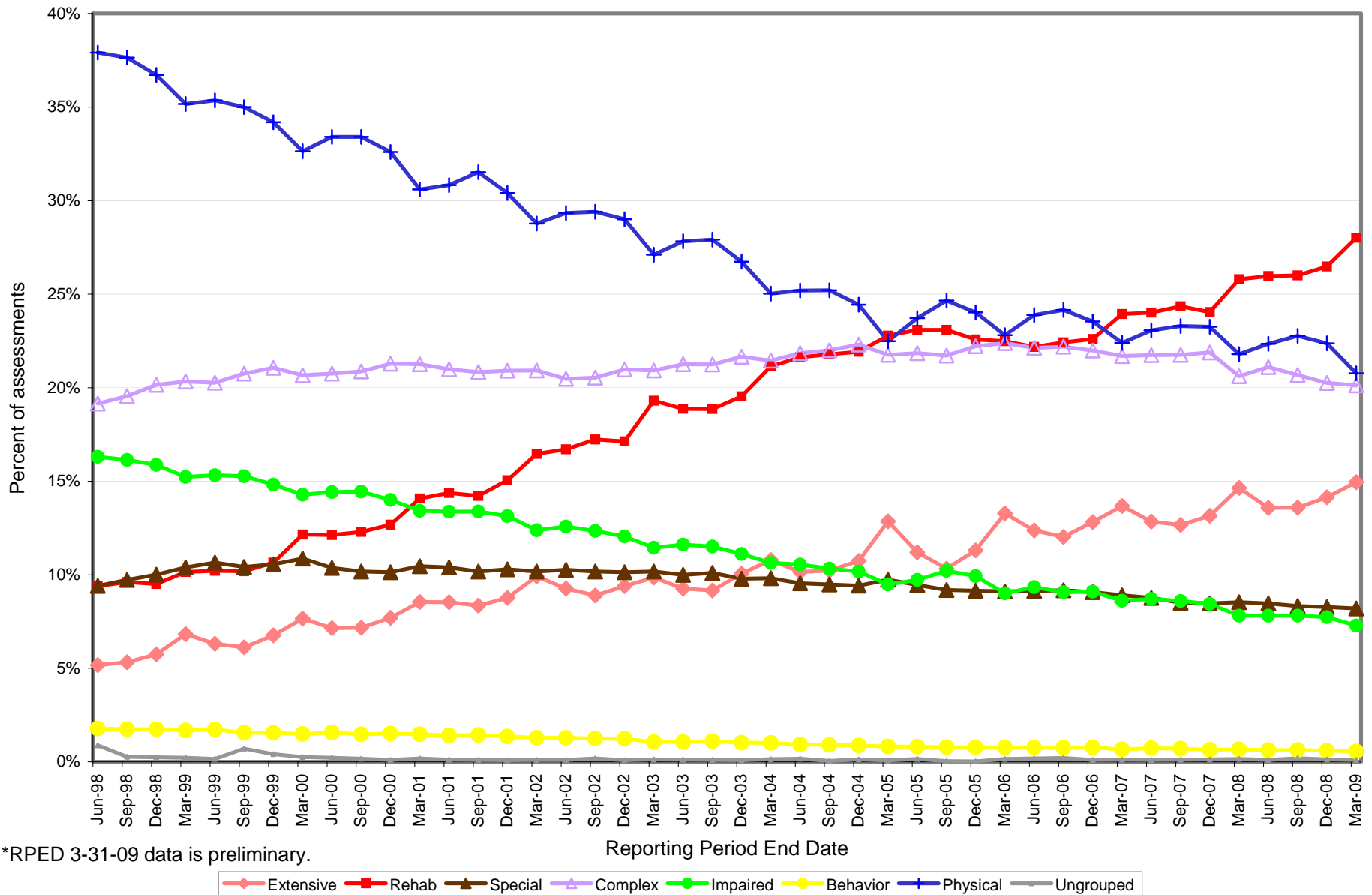
6. Resource Utilization Groups (RUGs)

6A. All Residents - RUGs

Nursing Facilities: Case Mix - RUG-III Categories for All Residents

(In percent of total assessments)

RPED 6/30/98 - RPED 3/31/09*



*RPED 3-31-09 data is preliminary.

Nursing Facilities: Case Mix – RUG-III Categories for All Residents

RPED 12/31/98 - RPED 3/31/09* (In percent of total assessments)

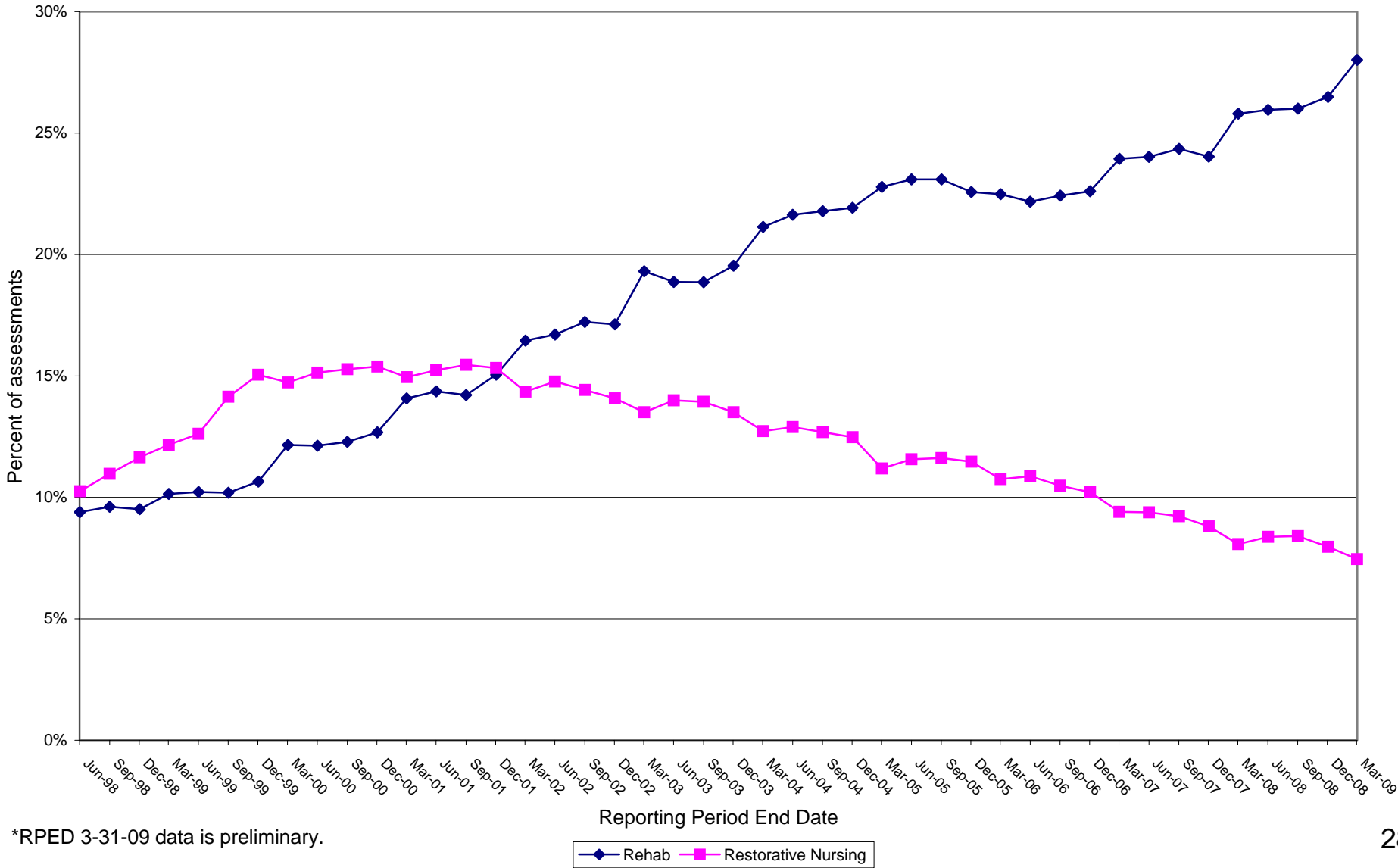
Actual RUGIII Group Distribution - Counts												Preliminary
CATEGORY	12/31/98	12/31/99	12/31/00	12/31/01	12/31/02	12/31/03	12/31/04	12/31/05	12/31/06	12/31/07	12/31/08	3/31/09
Extensive	4,774	5,529	6,201	6,980	7,432	8,026	8,668	9,111	10,370	10,647	11,309	11,997
Rehab	7,895	8,705	10,202	11,989	13,552	15,602	17,701	18,204	18,289	19,469	21,182	22,485
Special	8,311	8,628	8,154	8,200	8,024	7,813	7,604	7,376	7,333	6,859	6,615	6,579
Complex	16,738	17,216	17,136	16,662	16,602	17,288	18,007	17,917	17,789	17,726	16,206	16,157
Impaired	13,179	12,110	11,269	10,462	9,529	8,872	8,217	8,003	7,361	6,833	6,185	5,853
Behavior	1,450	1,271	1,221	1,082	977	821	702	629	627	523	481	438
Physical	30,486	27,946	26,237	24,216	22,952	21,345	19,723	19,371	19,046	18,844	17,899	16,668
Ungrouped	207	333	79	71	75	75	99	18	84	99	105	81
TOTAL	83,040	81,738	80,499	79,662	79,143	79,842	80,721	80,629	80,899	81,000	79,982	80,258
Restorative nursing	9,673	12,299	12,389	12,210	11,138	10,784	10,071	9,245	8,260	7,132	6,367	5,980
Clinical w/ depression	5,532	6,418	6,681	7,199	7,553	8,441	9,788	9,838	9,912	9,575	8,566	8,727

Actual RUGIII Group Distribution - Percentages												Preliminary
CATEGORY	12/31/98	12/31/99	12/31/00	12/31/01	12/31/02	12/31/03	12/31/04	12/31/05	12/31/06	12/31/07	12/31/08	3/31/09
Extensive	5.75%	6.76%	7.70%	8.76%	9.39%	10.05%	10.74%	11.30%	12.82%	13.14%	14.14%	14.95%
Rehab	9.51%	10.65%	12.67%	15.05%	17.12%	19.54%	21.93%	22.58%	22.61%	24.04%	26.48%	28.02%
Special	10.01%	10.56%	10.13%	10.29%	10.14%	9.79%	9.42%	9.15%	9.06%	8.47%	8.27%	8.20%
Complex	20.16%	21.06%	21.29%	20.92%	20.98%	21.65%	22.31%	22.22%	21.99%	21.88%	20.26%	20.13%
Impaired	15.87%	14.82%	14.00%	13.13%	12.04%	11.11%	10.18%	9.93%	9.10%	8.44%	7.73%	7.29%
Behavior	1.75%	1.55%	1.52%	1.36%	1.23%	1.03%	0.87%	0.78%	0.78%	0.65%	0.60%	0.55%
Physical	36.71%	34.19%	32.59%	30.40%	29.00%	26.73%	24.43%	24.02%	23.54%	23.26%	22.38%	20.77%
Ungrouped	0.25%	0.41%	0.10%	0.09%	0.09%	0.09%	0.12%	0.02%	0.10%	0.12%	0.13%	0.10%
TOTAL	100.00%	100.00%	100.00%	100.00%	100.00%	100.00%	100.00%	100.00%	100.00%	100.00%	100.00%	100.00%
Restorative nursing	11.65%	15.05%	15.39%	15.33%	14.07%	13.51%	12.48%	11.47%	10.21%	8.80%	7.96%	7.45%
Clinical w/ depression	6.66%	7.85%	8.30%	9.04%	9.54%	10.57%	12.13%	12.20%	12.25%	11.82%	10.71%	10.87%

RUGIII Group Distribution - Standardized Counts (Index=average number assessments RPED 6/30/98-3/31/09)												Preliminary
CATEGORY	12/31/98	12/31/99	12/31/00	12/31/01	12/31/02	12/31/03	12/31/04	12/31/05	12/31/06	12/31/07	12/31/08	3/31/09
Extensive	4,655	5,477	6,237	7,094	7,603	8,139	8,694	9,146	10,375	10,639	11,445	12,099
Rehab	7,698	8,623	10,261	12,185	13,864	15,822	17,755	18,274	18,298	19,455	21,436	22,676
Special	8,103	8,547	8,201	8,334	8,209	7,923	7,627	7,405	7,337	6,854	6,694	6,635
Complex	16,320	17,053	17,235	16,935	16,984	17,531	18,062	17,986	17,798	17,713	16,400	16,294
Impaired	12,850	11,996	11,334	10,633	9,748	8,997	8,242	8,034	7,365	6,828	6,259	5,903
Behavior	1,414	1,259	1,228	1,100	1,000	833	704	631	627	523	487	442
Physical	29,725	27,682	26,389	24,612	23,481	21,645	19,783	19,446	19,056	18,830	18,114	16,810
Ungrouped	202	330	79	72	77	76	99	18	84	99	106	82
TOTAL	80,966	80,966	80,966	80,966	80,966	80,966	80,966	80,941	80,941	80,941	80,941	80,941

*RPED 3-31-09 data is preliminary.

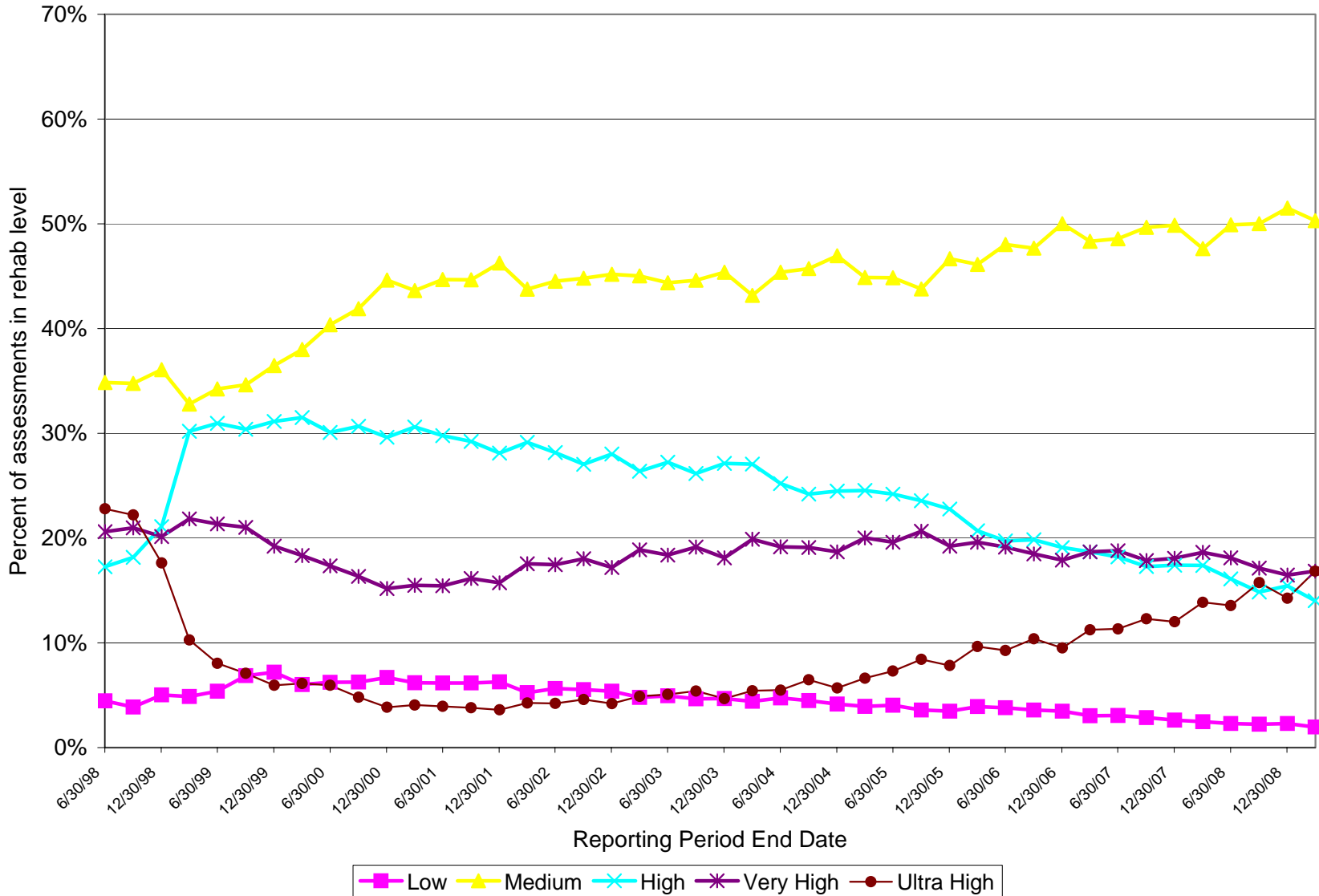
Nursing Facilities - Case Mix: Assessments Grouping in Rehab and Restorative Nursing (In percent of total assessments) RPED 6/30/98 - RPED 3/31/09*



Nursing Facilities - Case Mix: Rehabilitation Levels

(In percent of total rehab assessments)

RPED 6/30/98 - RPED 3/31/09*

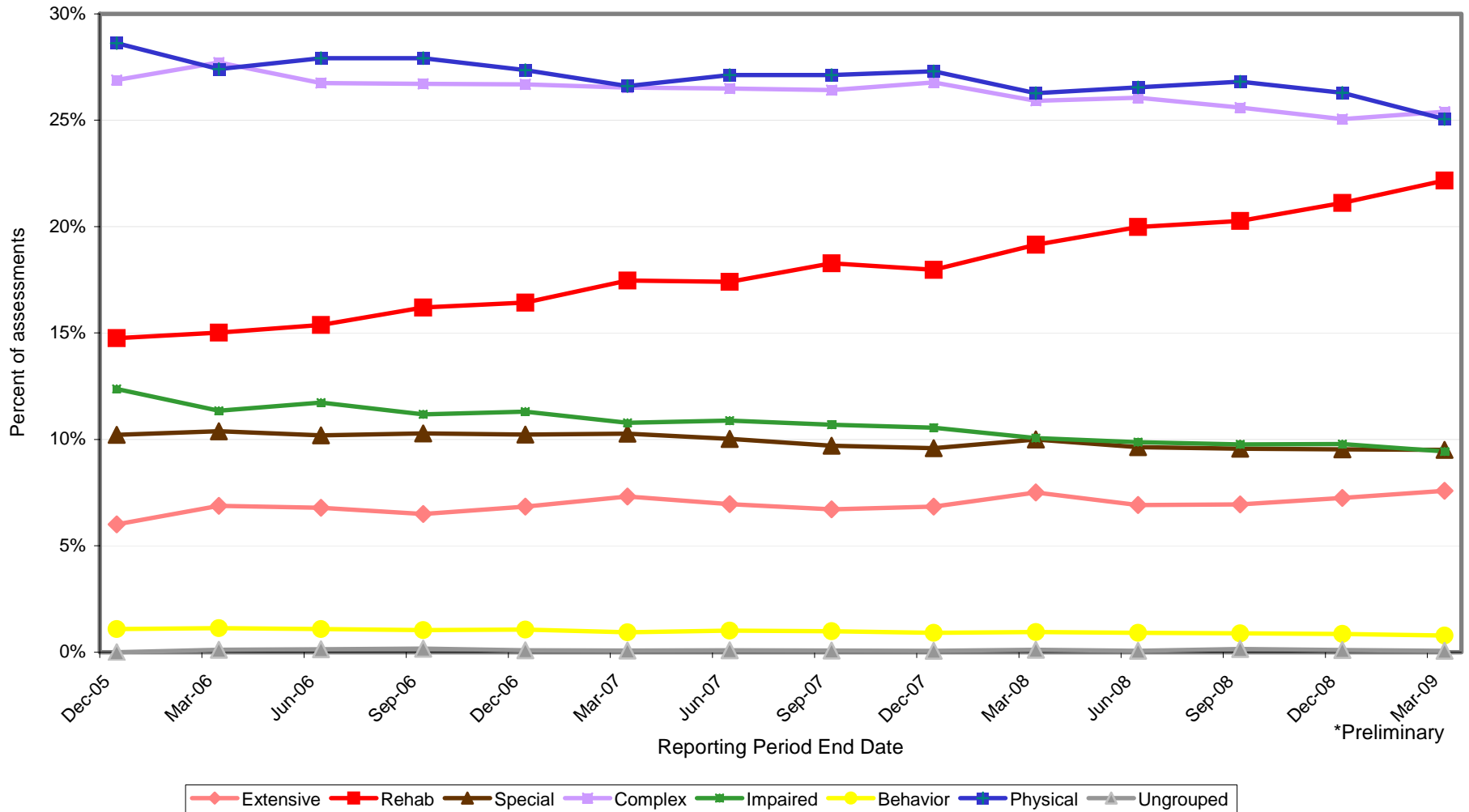


*RPED 3-31-09 data is preliminary.

6B. Medicaid - RUGs

Nursing Facilities - Case Mix: Medicaid RUG-III Categories

(In percent of total MCAID assessments)
RPED 12/31/05 - RPED 3/31/09*



*Preliminary

*RPED 3-31-09 data is preliminary.

Nursing Facilities: Case Mix – RUG-III Categories for Medicaid Residents

RPED 12/31/05 - RPED 3/31/09* (In percent of total assessments)

Actual RUGIII MCAID Group Distribution - Counts

Prelim

CATEGORY	12/31/05	3/31/06	6/30/06	9/30/06	12/31/06	3/31/07	6/30/07	9/30/07	12/31/07	3/31/08	6/30/08	9/30/08	12/31/08	3/31/09
Extensive	3,030	3,480	3,521	3,411	3,559	3,778	3,606	3,508	3,538	3,802	3,543	3,591	3,712	3,785
Rehab	7,442	7,600	7,978	8,505	8,550	9,024	9,018	9,554	9,299	9,696	10,240	10,475	10,801	11,060
Special	5,152	5,257	5,287	5,399	5,324	5,307	5,192	5,075	4,958	5,064	4,939	4,942	4,879	4,744
Complex	13,555	14,018	13,879	14,018	13,886	13,712	13,729	13,811	13,853	13,117	13,350	13,235	12,817	12,674
Impaired	6,239	5,742	6,083	5,867	5,883	5,573	5,639	5,591	5,461	5,093	5,058	5,049	5,001	4,709
Behavior	551	570	569	546	557	485	528	517	469	483	467	459	437	389
Physical	14,429	13,863	14,486	14,656	14,239	13,746	14,049	14,180	14,124	13,302	13,599	13,863	13,443	12,504
Ungrouped	2	60	70	85	44	41	45	38	30	60	36	80	53	31
TOTAL	50,400	50,590	51,873	52,487	52,042	51,666	51,806	52,274	51,732	50,617	51,232	51,694	51,143	49,896
Restorative nursing	6,852	6,481	6,600	6,355	6,184	5,734	5,732	5,644	5,360	4,897	5,038	5,089	4,739	4,520
Clinical w/ depression	7,533	8,072	7,880	8,040	7,913	7,869	7,816	7,805	7,658	7,256	7,316	7,313	6,929	7,070

Actual RUGIII MCAID Group Distribution - Percentages

Prelim

CATEGORY	12/31/05	3/31/06	6/30/06	9/30/06	12/31/06	3/31/07	6/30/07	9/30/07	12/31/07	3/31/08	6/30/08	9/30/08	12/31/08	3/31/09
Extensive	6.01%	6.88%	6.79%	6.50%	6.84%	7.31%	6.96%	6.71%	6.84%	7.51%	6.92%	6.95%	7.26%	7.59%
Rehab	14.77%	15.02%	15.38%	16.20%	16.43%	17.47%	17.41%	18.28%	17.98%	19.16%	19.99%	20.26%	21.12%	22.17%
Special	10.22%	10.39%	10.19%	10.29%	10.23%	10.27%	10.02%	9.71%	9.58%	10.00%	9.64%	9.56%	9.54%	9.51%
Complex	26.89%	27.71%	26.76%	26.71%	26.68%	26.54%	26.50%	26.42%	26.78%	25.91%	26.06%	25.60%	25.06%	25.40%
Impaired	12.38%	11.35%	11.73%	11.18%	11.30%	10.79%	10.88%	10.70%	10.56%	10.06%	9.87%	9.77%	9.78%	9.44%
Behavior	1.09%	1.13%	1.10%	1.04%	1.07%	0.94%	1.02%	0.99%	0.91%	0.95%	0.91%	0.89%	0.85%	0.78%
Physical	28.63%	27.40%	27.93%	27.92%	27.36%	26.61%	27.12%	27.13%	27.30%	26.28%	26.54%	26.82%	26.29%	25.06%
Ungrouped	0.00%	0.12%	0.13%	0.16%	0.08%	0.08%	0.09%	0.07%	0.06%	0.12%	0.07%	0.15%	0.10%	0.06%
TOTAL	100.00%	100.00%	100.00%	100.00%	100.00%	100.00%	100.00%	100.00%	100.00%	100.00%	100.00%	100.00%	100.00%	100.00%
Restorative nursing	13.60%	12.81%	12.72%	12.11%	11.88%	11.10%	11.06%	10.80%	10.36%	9.67%	9.83%	9.84%	9.27%	9.06%
Clinical w/ depression	14.95%	15.96%	15.19%	15.32%	15.21%	15.23%	15.09%	14.93%	14.80%	14.34%	14.28%	14.15%	13.55%	14.17%

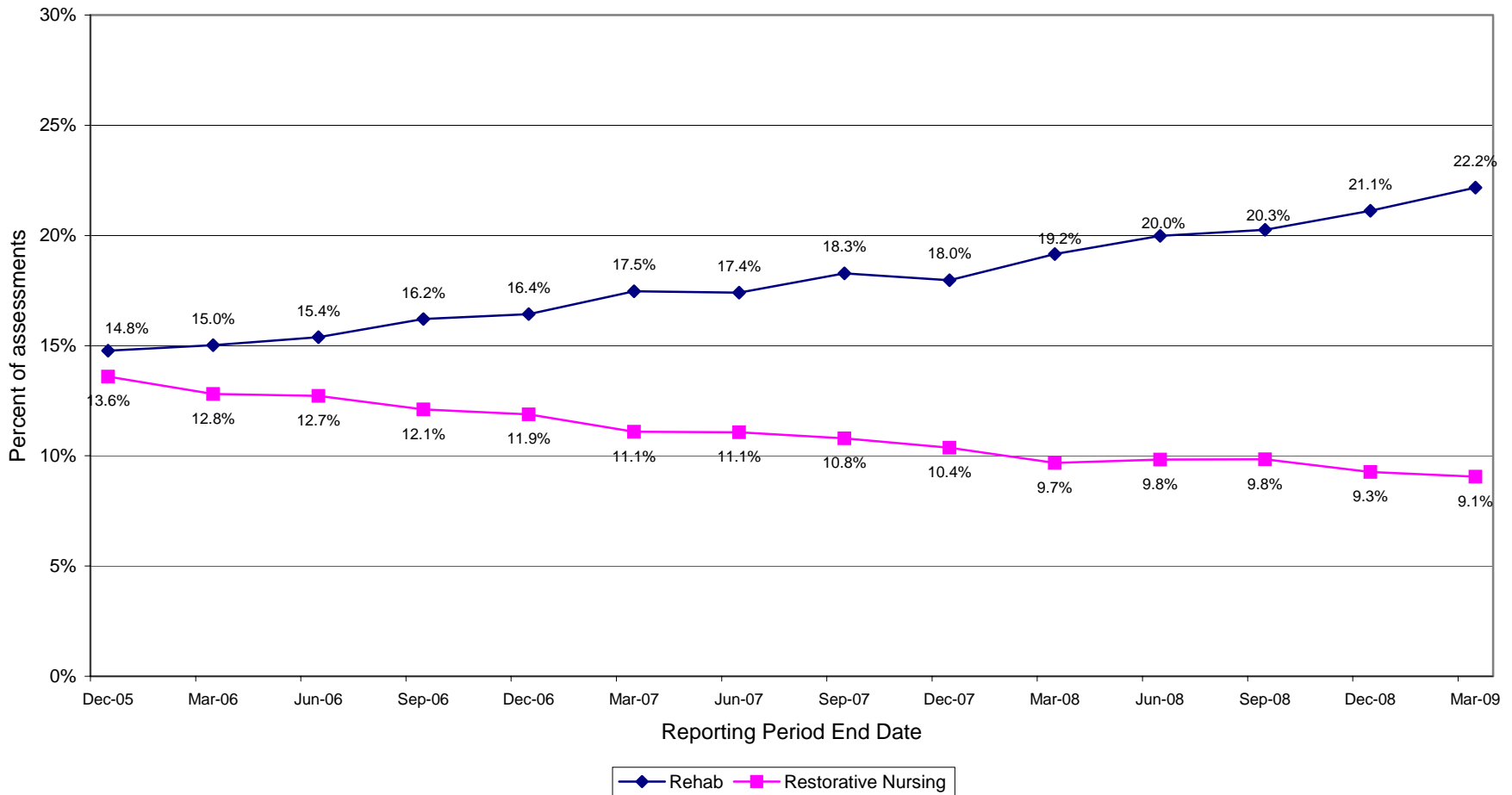
RUGIII MCAID Group Distribution - Standardized Counts (Index=average number assessments 12/31/05-3/31/09*)

Prelim

CATEGORY	12/31/05	3/31/06	6/30/06	9/30/06	12/31/06	3/31/07	6/30/07	9/30/07	12/31/07	3/31/08	6/30/08	9/30/08	12/31/08	3/31/09
Extensive	3,089	3,535	3,488	3,340	3,514	3,758	3,577	3,449	3,515	3,860	3,554	3,570	3,730	3,898
Rehab	7,588	7,720	7,904	8,327	8,443	8,976	8,945	9,392	9,237	9,844	10,271	10,413	10,853	11,391
Special	5,253	5,340	5,238	5,286	5,257	5,279	5,150	4,989	4,925	5,141	4,954	4,913	4,902	4,886
Complex	13,821	14,239	13,750	13,725	13,712	13,638	13,618	13,577	13,761	13,317	13,391	13,157	12,879	13,053
Impaired	6,361	5,833	6,026	5,744	5,809	5,543	5,594	5,496	5,425	5,171	5,074	5,019	5,025	4,850
Behavior	562	579	564	535	550	482	524	508	466	490	468	456	439	401
Physical	14,712	14,082	14,351	14,349	14,060	13,672	13,936	13,940	14,030	13,505	13,641	13,781	13,508	12,878
Ungrouped	2	61	69	83	43	41	45	37	30	61	36	80	53	32
TOTAL	51,389	51,389	51,389	51,389	51,389	51,389	51,389	51,389	51,389	51,389	51,389	51,389	51,389	51,389

*RPED 3-31-09 data is preliminary.

Nursing Facilities - Case Mix: MCAID Assessments Grouping in Rehab and Restorative Nursing (In percent of total MCAID assessments) RPED 12/31/05 - RPED 3/31/09*



*RPED 3-31-09 data is preliminary.

RUG Distribution and Comparison: All Residents vs. Medicaid RPED 3-31-09*

All Residents, RPED 3-31-09*

(In percent of total residents)

1. Rehabilitation	28.02%
2. Physical	20.77%
3. Clinically Complex	20.13%
4. Extensive	14.95%
5. Special Care	8.20%
6. Impaired	7.29%
7. Behavioral	0.55%
8. Ungrouped	0.10%

Medicaid, RPED 3-31-09*

(In percent of total Medicaid residents)

1. Clinically Complex	25.40%
2. Physical	25.06%
3. Rehabilitation	22.17%
4. Special Care	9.51%
5. Impaired	9.44%
6. Extensive	7.59%
7. Behavioral	0.78%
8. Ungrouped	0.06%

*RPED 3-31-09 data is preliminary.

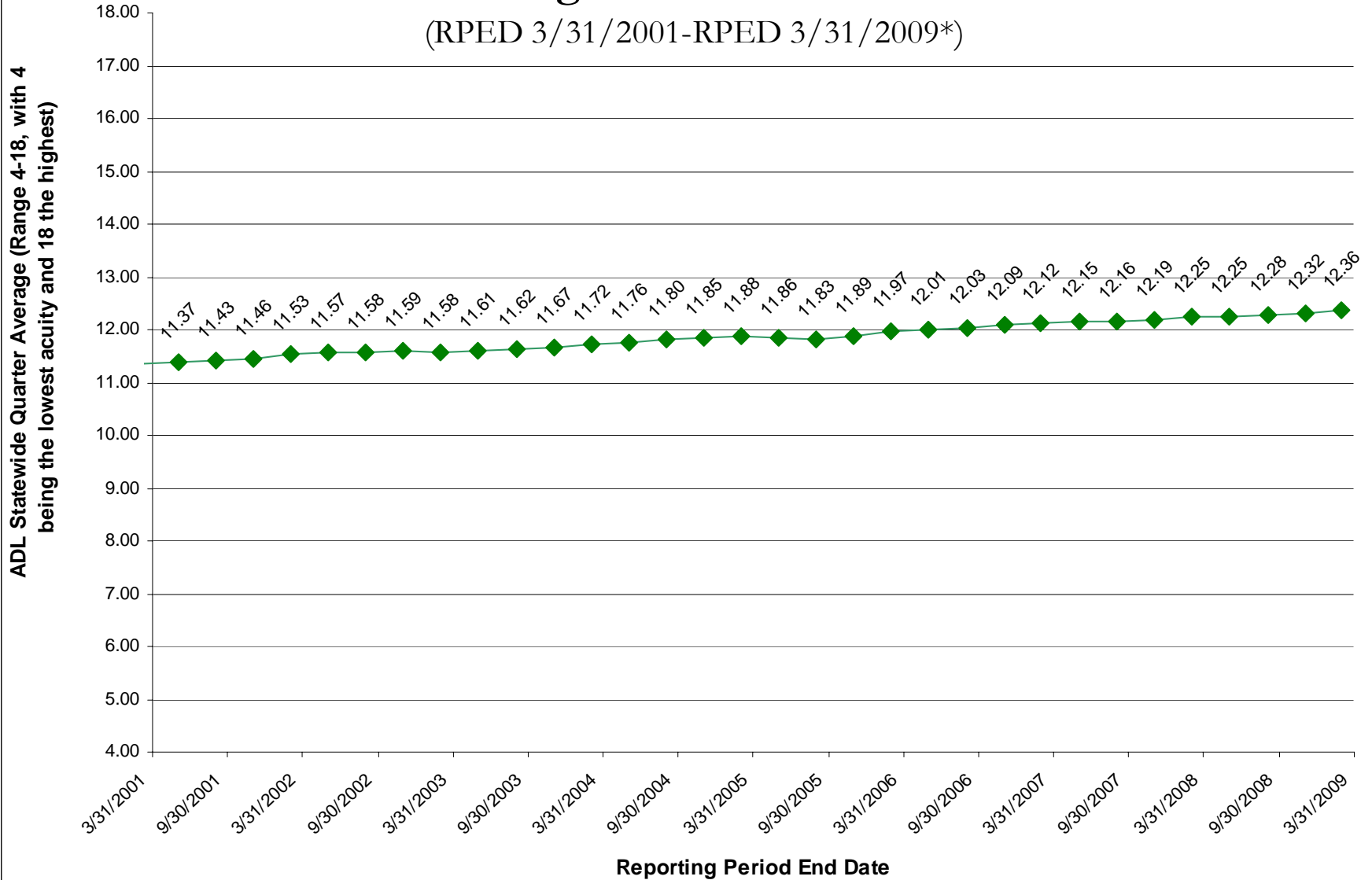
7. Activities of Daily Living (ADLs)

Activities of daily living (ADLs) are the activities people normally do in daily living including any daily activity performed for self-care. A number of national surveys and assessments collect data on the ADL status of the U.S. population, including the Minimum Data Set. Health professionals routinely refer to the ability or inability to perform ADLs as a measurement of the functional status of a person. This measurement is useful for assessing the elderly, the mentally ill, those with chronic diseases, and others, in order to evaluate what type of health care services an individual may need.

Nursing Facilities: ADL Statewide

Average for All Residents

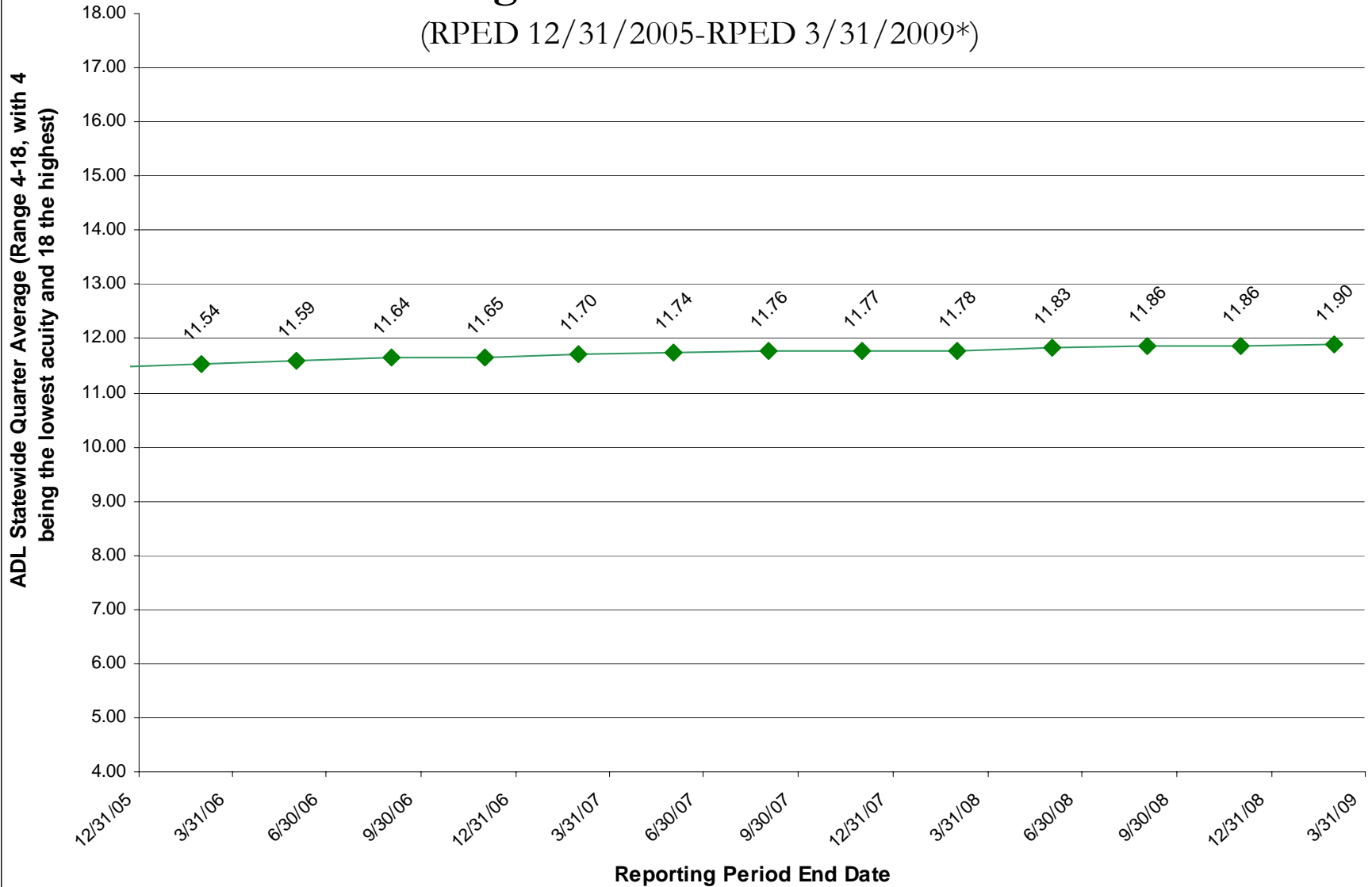
(RPED 3/31/2001-RPED 3/31/2009*)



*RPED 3-31-09 data is preliminary.

Nursing Facilities: ADL Statewide Average for Medicaid Residents

(RPED 12/31/2005-RPED 3/31/2009*)



*RPED 3-31-09 data is preliminary.